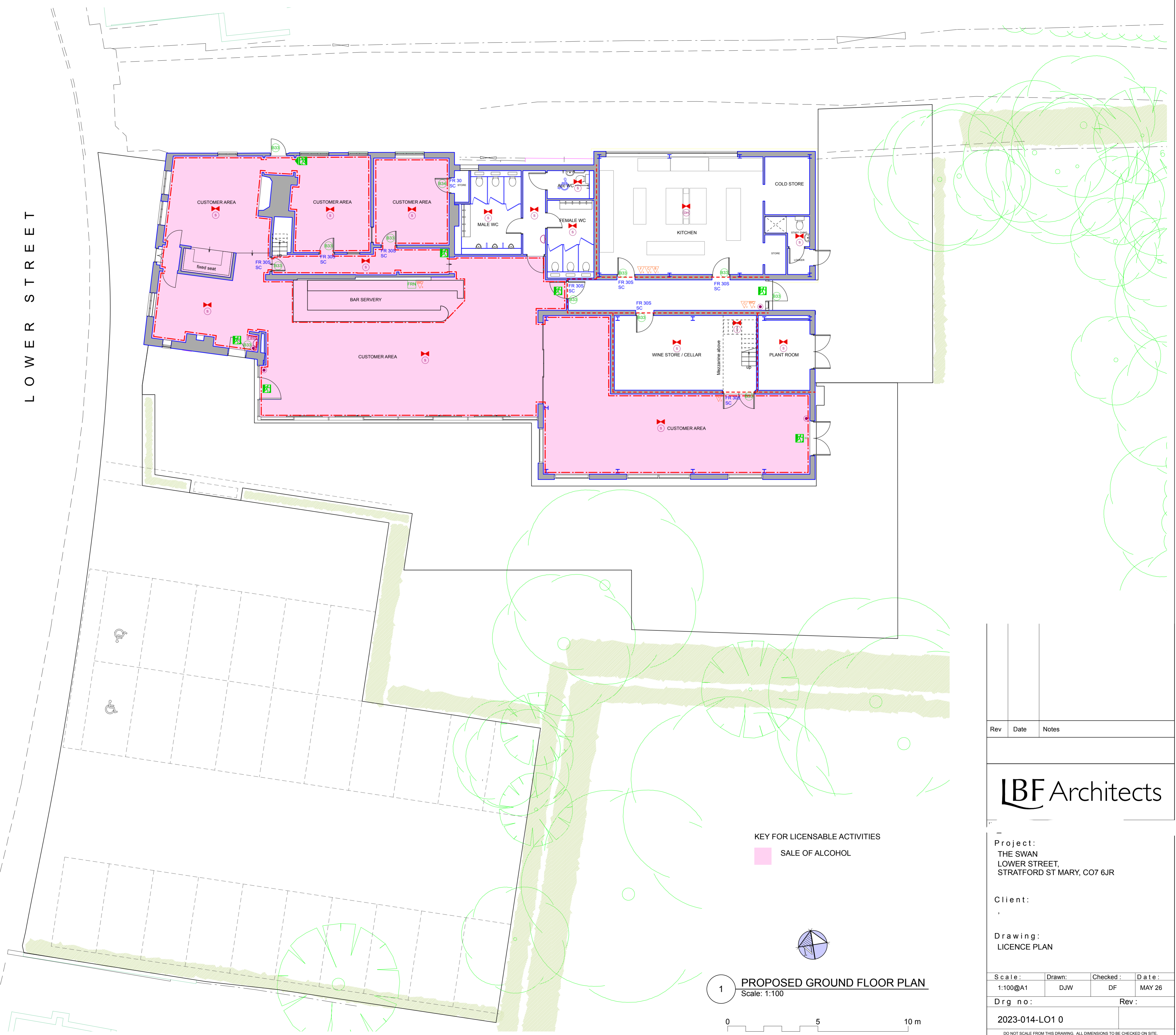


KEY TO FIRE REQUIREMENTS

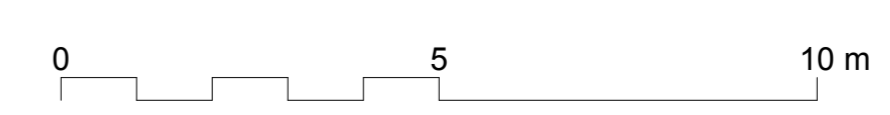
- STRUCTURE**
- 1HR FIRE RESISTING WALL
Partition to extend full height and be fire stopped to u/s of structural soffit
 - 1/2 HOUR FIRE RESISTING WALL
Partition to extend full height and be fire stopped to u/s of structural soffit
 - STUD PARTITION (NON-FR)
 - FD60S 1 HOUR FIRE RESISTING SELF-CLOSING DOOR WITH INTUMESCENT STRIPS AND SMOKE SEALS.
 - FD30S 1/2 HOUR FIRE RESISTING SELF-CLOSING DOOR WITH INTUMESCENT STRIPS AND SMOKE SEALS.
 - FD30 1/2 HOUR FIRE RESISTING SELF-CLOSING DOOR WITH INTUMESCENT STRIPS
 - /VP VISION PANEL IN FIRE RESISTING SELF-CLOSING DOOR. FIRE RESISTANCE AS NOTED
- FIRE SAFETY SIGNAGE IN ACCORDANCE WITH B.S. 5499 pt1 1990**
- B33 'FIRE DOOR KEEP SHUT' NOTICE, ref B.3.3 FITTED TO BOTH SIDES OF ALL FIRE DOORS.
 - B34 'FIRE DOOR KEEP LOCKED' SIGN, ref B.3.4
 - 310 'FIRE ESCAPE KEEP CLEAR' SIGN, ref B.3.10
 - FRN FIRE ROUTINE NOTICE.
 - PB PUSH BAR DEVICE OR SIMILAR EMERGENCY OPENING DEVICE WITH NOTICE 'PUSH BAR TO OPEN' B.4.4
 - ESC SAFE CONDITION ESCAPE ROUTE SIGN
- EMERGENCY LIGHTING INSTALLATION TO B.S. 5266 pt1 :1999 & BS EN 1838 : 1999**
- ⊗ AREA COVERED BY EMERGENCY LIGHT, 3 HOUR (MAINTAINED)
 - ⊗ AREA COVERED BY EMERGENCY LIGHT, 3 HOUR (NON-MAINTAINED)
 - ⊗ EMERGENCY LIGHT SPOTLIGHT, 3 HOUR (NON-MAINTAINED)
 - ESC ILLUMINATED BULKHEAD 'EXIT' SIGN, ref B.5.1 (MAINTAINED)
 - ESC 'EXIT' NOTICE WITH DIRECTION ARROW, ref B.5.2 (MAINTAINED)
- FIRE ALARM INSTALLATION TO B.S.5839 pt1 Protection type L1**
- RI FIRE ALARM RELAY INTERFACE
 - FIRE FIRE ALARM PANEL
 - DH AREA COVERED BY HEAT DETECTOR TO BS 5839, WITH INTEGRAL SOUNDER
 - S AREA COVERED BY SMOKE DETECTOR TO BS 5839 (OPTICAL), WITH INTEGRAL SOUNDER
 - VD AREA COVERED BY SMOKE DETECTOR TO CEILING VOID WITH INTEGRAL SOUNDER
 - AW AREA COVERED BY AUDIBLE FIRE ALARM WARNING DEVICE (SUBJECT TO AUDIBILITY TEST)
 - MANUAL CALL POINT
 - DD DOOR FITTED WITH AUTOMATIC DOOR DETANT LINKED TO FIRE ALARM INSTALLATION
 - Z ZEON BEACON (LOCATION TO BE AGREED WITH FPO)
 - in/out INPUT / OUTPUT UNIT
- The system shall provide automatic shutdown of all ventilation, high voltage systems, public address and music systems
- FIRE FIGHTING EQUIPMENT TO COMPLY WITH BS EN3, BS 7863 : 1996, BS 5306 - 3 : 2000 and BS 5306-8 : 2000**
- WC WET CHEMICAL (6ltr) WALL MOUNTED @ 1m
 - F6 FOAM SPRAY (6ltr) WALL MOUNTED @ 1m
 - F9 FOAM SPRAY (9ltr) WALL MOUNTED @ 1m
 - C2 CARBON DIOXIDE (2kg) WALL MOUNTED @ 1m
 - B1 FIRE BLANKET 1.1 X 1.1m WALL MOUNTED @ 1.5m
- Existing fire equipment retained. Only new or upgraded items are annotated on this drawing.
- UPHOLSTERY**
ALL UPHOLSTERY TO SATISFY CIGARETTE AND MATCH IGNITABILITY TEST AND IGNITION SOURCE 5 TESTS AS SPECIFIED IN BS 5852 : 1990 (1998)

LOWER STREET



KEY FOR LICENSABLE ACTIVITIES
SALE OF ALCOHOL

1 PROPOSED GROUND FLOOR PLAN
Scale: 1:100



Rev	Date	Notes

LBF Architects

Project:
THE SWAN
LOWER STREET,
STRATFORD ST MARY, CO7 6JR

Client:

Drawing:
LICENCE PLAN

Scale:	Drawn:	Checked:	Date:
1:100@A1	DJW	DF	MAY 26

Drg no: 2023-014-LO1 0
Rev:

DO NOT SCALE FROM THIS DRAWING. ALL DIMENSIONS TO BE CHECKED ON SITE. REFER ANY DISCREPANCIES TO ARCHITECT. THIS DRAWING IS SUBJECT TO COPYRIGHT.