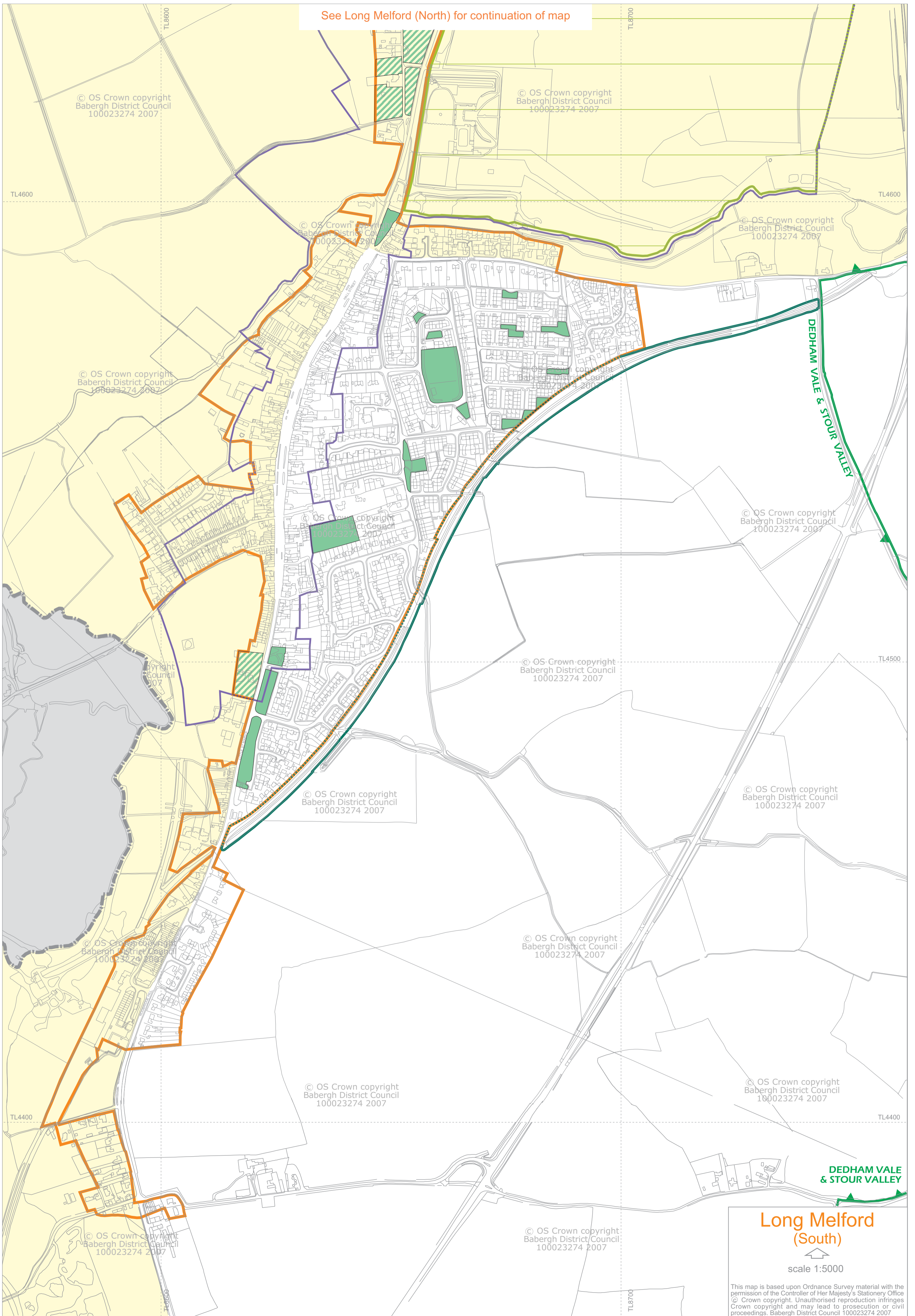


See Long Melford (North) for continuation of map



**Long Melford
(South)**

↑
scale 1:5000

This map is based upon Ordnance Survey material with the permission of the Controller of Her Majesty's Stationery Office © Crown copyright. Unauthorised reproduction infringes Crown copyright and may lead to prosecution or civil proceedings. Babergh District Council 100023274 2007