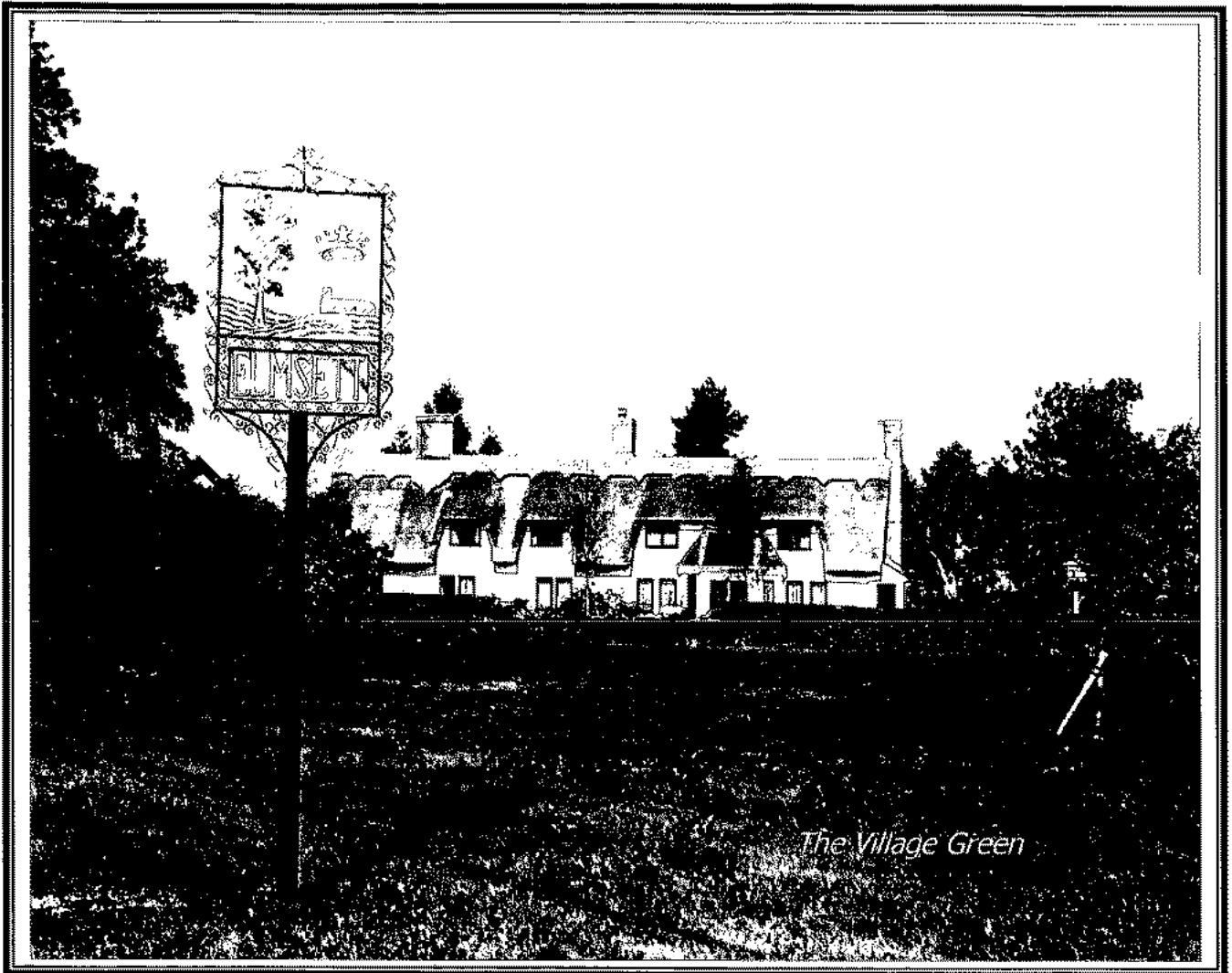


Elmsett Parish Plan



Your Village,
Your Plan,
Results and Report

£5
where sold

The report has been produced by Elmsett residents and distributed free to residents with help from....



Elmsett Parish Council



The
Countryside
Agency



Introduction

The results of this survey give a clear indication of Elmsett resident's opinions, wishes and desires with regard to a wide range of local issues. Village organisations and interested parties are encouraged to use these results to guide their future planning and support grant applications and lobbying etc.

The data presented can be interrogated by our computer package to give a more pertinent breakdown of the information e.g. how many car drivers would use public transport to Ipswich if better timetables were available or want car sharing opportunities. Another example might be a breakdown of those interested in adult education by age group etc etc.

If you have a desire to pursue a certain area please contact the action plan committee or the Parish Council to see what data we can provide.

Notes

There are 292 households in the village and replies were received from 262 a 90% return which means the results are very reliable. As 659 people replied the actual population of village can be estimated to be 725. Thank you to everyone that played their part from those who completed the questionnaire to those who distributed them and took part in its formulation.

When interpreting the results please note that "NUMBER OF HOUSEHOLDS" or "NUMBER OF RESPONDENTS" that follows the question number is the number of households or the number of people that answered that particular question.

Where the question gave the opportunity for comment the comments that were received have been reported in full adjacent to the question results. The comments are reported in full. Editorial comments to clarify particular comments are shown in italics. The committee takes no responsibility for the comments received neither can, or should they, be associated with those comments.

Report Structure

Index

Topic	Page
Introduction	2
Notes	2
Index	3
Some Statistics	5
Priority Actions	7
Recommendations and Actions	9
Actions Already Undertaken	13
Survey Results	15
Additional Survey Comments	43
Young Peoples Survey Results	51
Chronology	56
Action Plan Committee	57

Some Elmsett Statistics (December 2001)

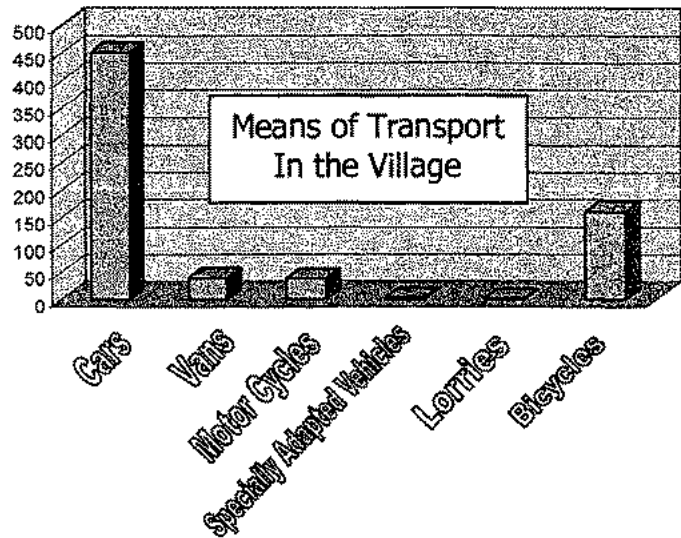
Total Population 725

Sex of Population aged over 11



Female 49%

Male 51%



97 People work in Ipswich

50 work in Elmsett

39 work in Hadleigh

Of the respondents

- 81% want to investigate a joint Village Hall/ School project
- 63% believe the environment is important
- 54% want a 'good neighbour' scheme in the village
- 61% want a greater police presence in the village
- 27% consider bus timetables to be poor
- 76% Elmsett should definitely not have more large housing estates
- 57% believe there are major 'danger spots' in or around Elmsett

Priority Actions

- Action Plan Group to continue, report to Parish Council and jointly decide actions needed and which body would be best placed to move a particular action forward
- Facilitate setting up an Environmental Group to capitalise on the support and take the various suggestions to fruition
- Undertake feasibility studies to investigate improvements to the Village Hall either standing alone or jointly with the school. – Consider accessing the Community Grant of £25,000 available from Countryside Agency
- Facilitate a Good Neighbour scheme– see page 9
- Facilitate Transport and Safety Group
- Transport group to consider Rural Transport Grant £10,000 - community Taxi scheme, support change to existing service or joint community bus scheme with other parishes
- Transport group to lobby Suffolk County Council Public Transport Section re timetable – is there a Transport Grant opportunity?
- Transport group to look at safety problems and list top ten locations/suggested solution and lobby Suffolk County Council Traffic and Safety Section for solutions
- Overwhelming support for school and playgroup send results to Suffolk County Council Education Department to inform how important the village considers the school is to it
- Lobby the Chief Constable for greater attention for the village and send list of comments in support
- Revitalise Neighbourhood Watch Scheme
- Inform the Shop, Post Office, Pub and Hairdresser of the views received for their information and any action they wish to take
- Form sports and activity clubs where practical and inform Suffolk College of education opportunity
- Parish Council to consider how to improve information flow
- Send results to churches for their consideration
- Forward results to Babergh District Council for consideration in the Local Plan
- Consider starting Youth Club
- Investigate possibility of running after-school clubs &/or holiday play scheme
- Improve outdoor play facilities

Recommendations and Actions (in Question Order)

Question Number 10 main survey and Q 4 of the young peoples survey :

If any ... children under 16 are unable to take part in after school activities, please give the reasons why :
In the main survey 13 families said yes and 18 young people said yes because of lack of transport home -

Action --- Transport group to consider community Taxi scheme

Question Number 20

Should various developments be encouraged in and around Elmsett

Action --- Forward results to Babergh District Council for consideration in the Local Plan

Question Number 21

Do you experience transport difficulties in getting out of Elmsett to other places?

Action --- Transport group to lobby Suffolk County Council Public Transport Section -- or Is there a Transport Grant opportunity?

Question Numbers 24, 25 and 26 main survey and Q 21 young peoples survey

Bus services , how useful are they and what are the problems?

Results show poor timetable at fault and low use of existing service

Action --- Transport group to lobby Suffolk County Council Public Transport Section -- and pursue the possibility of the Rural Transport Grant

Question Number 28

Do you think there are any major 'danger-spots' on the roads in and around Elmsett ? 266 people think there are

Action --- Transport group to list top ten locations/suggested solution and lobby Suffolk County Council Traffic and Safety Section for solutions

Question Number 29

Would you support speed control measures in Elmsett ? There was support for measures

Action --- Transport group to list top ten locations/suggested solution and lobby Suffolk County Council Traffic and Safety Section for solutions

Question Numbers 30, 31, 32, 33 and 34

How important are the school, playgroup and facilities?

Results show overwhelming support for school and playgroup

Action --- Send results to Suffolk County Council Education Department to inform how important the village considers the school is to it

Question Number 37

Are there difficulties in accessing medical facilities?

58 people said they often or occasionally have difficulty in getting to the following the Hospital or Doctor

Action --- Good Neighbour scheme solution or Transport group to consider the possibility of the Rural Transport Grant

Question Number 39

Do you have problems in collecting medicine on prescription? 24 people said yes

Action --- Good Neighbour scheme solution or Transport group to consider the possibility of the Rural Transport Grant

Question Number 40

Is there a need for a 'good neighbour' scheme in Elmsett ?

A Good Neighbour Scheme is an initiative run by a group of villagers who appreciate the importance of having "good neighbours" and are keen to ensure that such valuable support is on hand for anyone in the village who needs it.

Acting as a safety net for anyone in the village they offer a friendly, easily accessible local service that responds to calls for help from any villager, young and all alike.

For some having a care scheme in the village can extend the length of time they are able to remain in their own homes living and in independent life.

They can help to lessen the impact on a community of the ongoing decline in village services and facilities such a shop, Post Office, surgeries and pubs.

They can also help to reduce feelings of isolation and exclusion experienced by some individuals if families and friends move away in the search for employment, education or affordable housing.

267 people said yes

Action --- Form a Good Neighbour scheme from the people who volunteered

Question Numbers 42 and 43 showed that 256 people wanted a greater police presence in the village

Action --- Lobby the Chief Constable for greater attention for the village and send list of comments in support

Questions 44, 45, 46 and 47 related to the use of village shops and services

Action --- Inform the Shop, Post Office, Pub and Hairdresser of the views received for their information and any action they wish to take

Question 48 – There was support to form Badminton, Keep Fit and Yoga

Action --- Hold Open Meeting in Village Hall to form clubs from interested people (Village Hall to take note for any future redevelopment)

Question 49 – What support was there to form Gardening and Rambling Clubs and for adult education

Action --- Hold Open Meeting in Village Hall to form clubs from interested people and inform Suffolk College of education opportunity

Question Number 51

What is your preferred option for the Village Hall

23 people (5.3%) said continue with the existing Hall that does not meet all the needs of the village and with a spiralling maintenance budget.

61 people (13.9%) said investigate the possibility of construction of an appropriate new Hall with external funding

354 people (80.8%) said investigate the possibility of a joint development of the Hall and school with external and local education authority funding that would have mutual benefits of securing the future of both uses.

Action --- As only 23 people want to continue with the existing hall and 415 people want to investigate improvements either standing alone or jointly with the school. Feasibility studies should be undertaken by the Village Hall Management Committee, the School, Elmsett Parish Council and Education Authority. Aldham Parish Council should also be invited to participate.

Question Number 56

How well does the Parish Council publicise its decisions and activities? Although 240 thought the council did very or reasonably well 75 thought it did badly

Action --- Parish Council to consider how to improve dissemination and consider setting up Web site.

Questions 60, 61 and 62

Your feelings about the churches and religious activities

Action --- Send results to churches for their consideration

Question Number 63, 64, 67, 69 and 70

How can the environment of Elmsett be protected and improved?

There was good support for various environmental activities to improve the village

Action --- Form Environmental Group to capitalise on the support and take the various suggestions to fruition

Young Persons Questionnaire Q 14

Which new sports clubs/activities would you attend

35% would attend a youth club

Action --- Invite interested persons to an open meeting.

Actions Already Undertaken

- Queens Golden Jubilee Celebrations (66% voted in favour of event)
- Pavement provided along Hadleigh Road, Whatfield Road and The Street
- Joint meetings between School, Education Authority, Village Hall Management Committee and Parish Council underway
- Drainage at Whatfield Road and Flowton Brook improved
- Parish Council have started to prepare a Web Site

Results

HOUSEHOLD SECTION

Question Number : 1 NUMBER OF HOUSEHOLDS : 262

How many people including children normally live in the village?

659 (Replied and as we had 90% return the actual Population of Village was **725**)

Question Number : 2 NUMBER OF HOUSEHOLDS : 262

Please enter the number of people in your household in each age group:

	Male	Female
0-4	17	21
5-10	21	25
11-15	26	23
16-17	13	10
18-24	20	15
25-44	70	74
45-59	87	84
60-64	26	20
65-74	34	32
75-84	15	17
85+	1	8

Question Number : 3

Where does your household live?
NUMBER OF HOUSEHOLDS : 262

Hadleigh Road – inc. Garrards Road & Sawyers	105 (40.1)
Ipswich Road – inc. Newlands, Windings & Downlands	61 (23.3)
Whatfield Road – inc. Chequers Park & Mill Lane	47 (17.9)
The Street – inc. Manor Rd, Hazelwood & Flowton Rd	49 (18.7)

Question Number : 4
NUMBER OF HOUSEHOLDS : 262
Is this dwelling?

Private rented	7	(2.7) %
Local authority rented	21	(8.0) %
Housing Association rented	7	(2.7) %
Owner occupied	214	(81.0) %
Shared ownership (part owned/part rented)	2	(0.8) %
Provided as part of employment (e.g.MOD)	3	(1.1) %
Other	7	(2.7) %

Question Number : 5
NUMBER OF HOUSEHOLDS : 262
What type of dwelling is this?

Detached house	82	(31.3)%
Semi-detached house	47	(17.9)%
Terraced house	2	(0.8) %
Bungalow	109	(41.6)%
Flat/maisonette	9	(3.4) %
Specially adapted housing	1	(0.4) %
Mobile home/caravan	7	(2.7) %
Other	3	(1.1) %

Question Number : 6
NUMBER OF HOUSEHOLDS : 262
Which of the following amenities does your dwelling have?

Mains electricity	261	(99.
Mains piped water	252	(96.
Mains Gas	141	(53.
Mains Sewage	222	(84.
Hot water supply	255	(97.
Inside WC	259	(98.
Plumbed bath and wash basins	260	(99.
Lagged hot water tank	228	(87.
Loft insulation	234	(89.
Double glazing	213	(81.
Cavity wall insulation	131	(50.
Internet Access	128	(48.

Do you have flooding problems with surface water or storm drainage?

Many problems	8	(3.1 %)
Few problems	53	(20.2)
No problems	187	(71.)
No opinion	6	(2.3 %)

Question 7 Comments - THERE ARE FLOODING PROBLEMS WITH
Surface water - Hadleigh Road
Road outside & pond in back garden
Drive & road entrance
Soakaways, in front of bungalow due to previous burst water main
Front drive/garage very occasionally
Drive way
Depending on weather, Garrards Road
Front porch
Front entrance
As my path is low the front lawn slopes so (have) flooding by front door
Back garden
Front drive in very wet conditions
Front of house on road. Road drains away from roadside drain
Bottom of garden
Front of garage
Back door
Front drive off Ipswich Road
Rear of cottage - opposite side of garden to drainage ditch! Have dug sump & put in pump which we hope will solve the problem
Back garden
Front garden of 2 Elm Cottage after rain
Front and rear
Garden
Entrance to house on road
Piped drain at front of property blocking
Surface water ponding in garden
Farmers ditch at back of Whatfield Road
Kitchen & annex flooded in September 2000 - February 2001, our home is situated next to a farmers field which slopes in the direction of our home. A ditch runs water off his land and onto our garden. Letters to advise the farmer of this have been ignored.
We live in Whatfield Road and there is inadequate drainage on this road. Water collects at the bottom by the pond making the road too deeply flooded to drive through in severe rain
Home & Whatfield Road
Bottom of garden
In back garden
Whatfield Road generally
Whatfield Road access to Chequers Park. Leading to standing water in front of & inside garage
Access to village pond MUST be kept clear
Front gate
In yard, comes from field at back
Whatfield Road by pond
Driveway
Top of garden
Rear garden
Back garden it far end
Driveway from water from the road
Front drive
Back garden
Flowton Brook
Bottom of garden
Rear garden
If we have a lot of rain part of my garden is under water. I believe there might have been a pond there in the past

Back garden
Back Garden
Pond at Whatfield Road end of village overflowed and flooded front garden
From the Street
Driveway - surface water
Pond across road in front of Malting Farm
Whatfield Road. In heavy rain water runs down road then into pond causing flooding onto road
Front gate
Whatfield Road near green at pond
Paddocks

Question Number : 8
NUMBER OF HOUSEHOLDS : 262

If your household/individual is unable to move to accommodation of the type needed, is this because?

Price	26 (9.9)
Lack of suitable stock to buy	29 (11.1)
Lack of local authority/housing association	11 (4.2)
Lack of private rented accommodation	4 (1.5 %)
Lack of physically accessible stock	2 (0.8 %)
No suitable sheltered housing	1 (0.4 %)
Not able to get a job	1 (0.4 %)
Unable to afford the cost of moving	3 (1.1 %)
Other financial commitments	0 (0.0 %)
Other	11 (4.2)

Question Number : 10
NUMBER OF HOUSEHOLDS : 262

If any of your children under 16 are unable to take part in after school activities, please give the reasons why :

Lack of transport home	13 (5.0)
Distance between home/school	11 (4.2)
Expense	2 (0.8 %)
Special needs not catered for	1 (0.4 %)
Other - please specify below	2 (0.8 %)

Question Number : 11
NUMBER OF HOUSEHOLDS : 262

How many roadworthy vehicles are kept by your household?

Cars	406
Vans	35
Motor Cycles	34
Specially adapted vehicles	3
Lorries	1
Bicycles (used at least once a week)	145

Question Number : 9
NUMBER OF HOUSEHOLDS : 262

Enter the number of children under 16 in your household who attend the following :

Stepping Stones	15
Play Group/Early Years	21
Private Nursery School	5
Primary school	46
Middle school	2
Secondary school	46
School for those with special needs	3
Other	9

Question 10 Comments - MY CHILDREN ARE UNABLE TO TAKE PART IN SCHOOL ACTIVITIES BECAUSE:

Lack of interest
Logistical nightmare
(Lack of transport home after school for under 16's) Can be difficult at times

PERSONAL SECTION

Question Number : 12

NUMBER OF RESPONDENTS TO QUESTION : 532

Sex	
Male	271 (50.
Female	261 (49.

Question Number : 13

NUMBER OF RESPONDENTS TO QUESTION : 531

What age group do you belong to?

11-15	14	(2.6%
16-17	21	(4.0%
18-24	31	(5.8%
25-44	144	(27.
45-59	170	(32.
60-64	44	(8.3%
65-74	68	(12.8
75-84	30	(5.6%
85+	9	(1.7%)

Question Number : 15

NUMBER OF RESPONDENTS TO QUESTION : 518

How did you come to live in Elmsett ?

Born here	60 (11.6
Work in area	111 (21.
Relatives live nearby	53 (10.2
Love of village/country life	197 (38.
Desire to live in Elmsett	59 (11.4
Availability of housing	81 (15.6
Retired here	39 (7.5%
Marriage	39 (7.5%
Setting up home	56 (10.8
Came with family	100 (19.
Other	29 (5.6%

Question Number : 16

NUMBER OF RESPONDENTS TO QUESTION : 502

What is most important to you about Elmsett ?

The community	254 (50.
The environment	142 (28.
Other	11 (2.2%
Not sure	28 (5.6%
The location	67 (13.3

Question Number : 14

NUMBER OF RESPONDENTS TO QUESTION : 520

How long have you lived in Elmsett ?

Less than a year	22 (4.2%
1-5 years	103 (19.
6-15 years	152 (29.
16-25 years	114 (21.
26-50 years	82 (15.8
51 + years	17 (3.3%
Whole life	30 (5.8%

Question 15 - OTHER REASON FOR COMING TO LIVE IN ELMSETT

The (type of) property
Moved from Layham
To get away from London
Bought private house
Moved back with parents after divorce
Husband came here because of work
Hadleigh School catchment area
Need for family size bungalow as two of our children have physical disabilities. No suitable bungalows in Hadleigh where we lived previously
Land was available for home build
Good school nearby
To live with parents
Worked in area as a base for travel throughout the UK & Europe until retirement
House exchange
Became familiar with area whilst visiting friends resident here
Moved due to work move - but since then work moved to London but do not want to move away
Village amenities
Moved here due to school catchment area
Bought a piece of land & built a house
Renting while looking to buy in the area
Joined religious community 1940

Question Number : 17

NUMBER OF RESPONDENTS TO QUESTION : 525

Are you at present?

An employee	221 (42.1%)
Unemployed	8 (1.5%)
Self-employed - employing other people	23 (4.4%)
Self employed - not employing anyone	30 (5.7%)
In a government training scheme	0 (0.0%)
In full-time education	35 (6.7%)
Unwaged housewife/husband	29 (5.5%)
Retired	135 (25.5%)
Permanently sick/disabled	13 (2.5%)
Voluntary	3 (0.6%)
Part-time	28 (5.3%)

Question Number : 18

NUMBER OF RESPONDENTS TO QUESTION : 297

Where is your main place of work?

Elmsett	50 (16.8%)
Ipswich	97 (32.7%)
Hadleigh	39 (13.1%)
Colchester	11 (3.7%)
Needham Market	4 (1.3%)
Stowmarket	6 (2.0%)
Felixstowe	7 (2.4%)
Bury St Edmunds	4 (1.3%)
Martlesham	3 (1.0%)
Sudbury	8 (2.7%)
Other - Please specify	68 (22.9%)

Question 18 Comments on other - MAIN PLACE OF WORK

Mainly work from home
East Bergholt
All over the county
1) All over the country 2) Boxford 3) Polstead
M25 - Brentwood-Kings Lynn, Gt. Yarmouth, Cambridge. Work from home for Home Office covering majority of East Anglia
Bildeston
Hintlesham
No fixed place
Great Blakenham
Travel all areas
Bildeston
London
Nation-wide
Retired
All over the place
Ashbocking
Bramford
Monks Eleigh
I travel all over the country
All over Suffolk
Claydon
1) Countrywide 2) Semer
London
Regularly abroad but based in Ipswich and eligible to pay UK tax
Self-employed therefore work in many Suffolk towns
Wattisham airfield
London
1) Tiptree, Essex 2) Sproughton
Norfolk - Essex - Suffolk
Earls Colne
Hintlesham
Within 10 miles of Hadleigh
Hintlesham

Ringshall
1) Cambridge
2) Nayland
1) Reading
2) London
Great Bricett
Brentwond
Great Bricett
Bildeston
Surrounding villages & towns
1) National
2) Eastern & Southern UK
Wattisham
Retired
Throughout Suffolk & Essex
Woolverstone
Glemsford
East Anglia
London
Harwich
Duxford, Cambridge
Claydon
Brentwood
1) Hintlesham
2) Bildeston
Clayon
London
Chelmsford, Essex
Frinton-on-Sea
Long Melford
Everywhere

Question Number : 19

NUMBER OF RESPONDENTS TO QUESTION : 23

If you are actively seeking work, are there any barriers that are preventing you from taking up employment, training or study opportunities?

Lack of alternative care for adult dependants	0 (0.0%)
Lack of child care locally	4 (17.4%)
Cost of child care locally	4 (17.4%)
Lack of access to transport	4 (17.4%)
I don't have the right type of experience	3 (13.0%)
I don't have the right type of qualifications	4 (17.4%)
Disability or ill health of some kind	6 (26.1%)
lack of part time work	5 (21.7%)
None of these	5 (21.7%)

Question 19 Comments on other BARRIERS TO TAKING UP WORK.
Retired
Prevented from working full-time owing to number of medical appointments attended by two children with physical disabilities
Age!
Age against myself
1) Changing career
2) Language problems

Question Number : 20

NUMBER OF RESPONDENTS TO QUESTION : 463

Should the following be encouraged in and around .. ?

	1 – strongly favour	2 - in favour	3 - no strong opinion	4 - have reservations	5 – definitely not
Small business development	48 (10.4)	137 (29.)	104 (22.)	58 (12.5)	77 (16.6)
Small scale industrial workshops	26 (5.6%)	87 (18.8)	88 (19.0)	87 (18.8)	114 (24.)
More jobs in Elmsett please specify type	25 (5.4%)	48 (10.4)	115 (24.)	12 (2.6%)	51 (11.0)
Small groups of Houses	74 (16.0)	160 (34.)	67 (14.5)	72 (15.6)	53 (11.4)
Large Housing Estates	1 (0.2%)	1 (0.2%)	19 (4.1%)	25 (5.4%)	352 (76.)
Tourism development/attractions	10 (2.2%)	51 (11.0)	96 (20.7)	100 (21.)	119 (25.)
Camping sites	4 (0.9%)	29 (6.3%)	109 (23.)	82 (17.7)	164 (35.)
Sites for permanent holiday caravans	4 (0.9%)	0 (0.0%)	48 (10.4)	72 (15.6)	263 (56.)
Bed and Breakfast trade	12 (2.6%)	148 (32.)	154 (33.)	35 (7.6%)	45 (9.7%)
Guest houses	8 (1.7%)	101 (21.)	175 (37.)	46 (9.9%)	62 (13.4)
Other - Please specify	2 (0.4%)	4 (0.9%)	5 (1.1%)	1 (0.2%)	8 (1.7%)

Question 20 comments - SUGGESTIONS FOR TYPES OF JOBS IN ELMSETT
Depends on the type of industry that can be generated. Mix of labour and technical
Control upon weight of heavy goods vehicles
Those places like Poplar Farm create employment for locals
Only very small scale business developments
I think Elmsett is fine the way it is
In any small businesses
Affordable housing for the young people of Elmsett and also for the pensioners who need smaller dwellings
Perhaps a touring site would be acceptable
Craft type enterprise
Agricultural
Holiday cottages -in favour (B)
Any jobs which may go with a business development
Technology related jobs. Set up units equipped for broad-band data transfer
Jobs to be encouraged but not to involve major traffic
Agricultural/country crafts
Skilled labour
Any type
Use redundant agricultural buildings
Manual labour/varieties
Jobs that fit into village environment
Affordable housing/ discourage small houses being made unaffordable for future sale. Would like to see Village stay as a "community" & not go over the fine dividing line to become a "busy" village and lose the community spirit it has
Cannot comment
All types
Any
Light industrial, craft centred?
Anything for local people
The village has suffered for the closure of the mill
More local trade
People live in Elmsett - small business provides employment reduces commuting
More employment required - any type

Question Number : 21

NUMBER OF RESPONDENTS TO QUESTION : 474

Do you experience transport difficulties in getting out of Elmsett to other places?

Often – please specify	23 (4.9%)
Occasionally – specify	109 (23.)
Never	342 (72.)

Question 21 comments - TYPES OF TRANSPORT DIFFICULTIES EXPERIENCED
Often have problems getting to Benton St, Hadleigh
When car is in for repair or service
Route 107 10.00am from Hadleigh should be extended to serve Aldham Corner at 10.19 on Tuesdays, Wednesdays & Saturdays. The same as the 12.20 daily service from Hadleigh. The same applies to the 13.25 & 15.50 from Ipswich
Floods
Passing lorries on narrow roads
Rely on buses when car not available (cannot drive)
I am unable to travel on public transport
Everywhere because we take a wheelchair
I rely on Family
To connect with bus in Hadleigh for 6th Form
Sunday, late evening, Friday
Poor roads
1 car family
Buses to & from Hadleigh
The bus timetable (<i>is</i>) not very good so have problems using the service
Bus is my only means of transport
Only when the roads are icy or flooded
Flooding at Flowton Brook
Flooding
Lack of connections of buses to other towns. Timetable? When I go out on my own
Lack of maintenance in wet or icy conditions i.e. hills & fords
Buses are not frequent enough
To workplace in Ipswich
Only when we had heavy rain
Road flooding at Flowton and Whatfield Road millpond
Dependant on a car
When most access roads are flooded
Own our cars so transport itself not a problem but roads in and out of Elmsett sometimes difficult to use when weather conditions severe
Not enough buses at regular times
Car breakdowns - lack of public transport
I rely on my own wheels as I have for the last 45 years
When no public transport & parents out with cars
1) Buses too few & far between
2) Agreed – especially the longish wait to get back from Hadleigh to Elmsett
Difficulty during normal working hours
No, independent transport/public is poor
Buses not always at convenient times
Flooded Flowton Brook, & Aldham Church
Timing for appointments - Rail /Bus links
Too and from college in Ipswich & Hadleigh
Bus service limited
Flooding – Flowton etc.
If unable to drive
N/A elderly
Car owner
To Needham Market, Stowmarket etc might be possible from Ipswich, understand it's not possible to get back to Elmsett (<i>after 4pm</i>)
Lack of public transport
Flooding
The Flooding at Flowton
No buses on Fridays!

We've been cut off twice in 8 years - once by drifting snow and once by water
Going to town by bus - not frequent service
The 1071 road can be a problem at certain times
Flooding of road at Flowton Brook Farm. Occasionally meet cars, trucks & buses travelling in opposite direction at inappropriate speed
Flooding on roads to Elmsett
Buses not frequent enough
Have to rely on parents for lifts
Flooding of roads to Hadleigh & Ipswich
During flood times and when I am unable to get a lift
Don't use the transport (<i>elderly/no car</i>)
Impossible to get to hospital & doctor appointments
During adverse winter weather
Icy roads
Flooded roads
Inflexibility of bus timetable. Getting back is more the problem as the last bus back is 15.50 from Ipswich which is quite early when shopping.
Intermittent bus service
Flooding at Flowton Brook and occasionally in Elmsett (Whatfield Road)
I depend on the bus!
(<i>Public</i>) Transport to work before 9 am non-existent
Would like a bus direct to Ipswich again about 8am

Question Number : 22

NUMBER OF RESPONDENTS TO QUESTION : 451

what do you use the vehicle for?

Business journeys	120 (26.
Transport to work	245 (54.
Taking children to school/playgroup in	38 (8.4%
Taking children to school/college out o	57 (12.6
Leisure	379 (84.
Shopping	363 (80.
Other	34 (7.5%
Not applicable	25 (5.5%

Question 22 - OTHER USES FOR CAR	
Taking those without transport out of the village	
Visiting Doctor or Dentist	
Visiting doctor or hospital	
Occasional transport for elderly	
Medical appointments	
Grandchildren live outside Elmsett	
Visits to family in area	
Attending doctor/hospital	
Doctors & Hospital visits	
Regular medical appointments for two children with physical disabilities	
Picking up relatives	
To do my job	
Hospital appointments	
Visit church / village shop only - elderly	
Visiting friends & relations	
Attending Doctors	
Visits to Dentist & Doctor	
Job search / Training	
Pleasure - Sports car!!	
Taking children to out of school activities - not available in Elmsett	
Taking children to school / playgroup / activities in Hadleigh	
Taking partner to and from work as no alternative except taxi	

Question Number : 23

NUMBER OF RESPONDENTS TO QUESTION : 502

Which of the following is your major means of transport?

Car	467 (93.
Bus	22 (4.4%)
Motor Cycle/Scooter	4 (0.8%)
Bicycle	9 (1.8%)

Question Number : 24

NUMBER OF RESPONDENTS TO QUESTION : 346

If you use the bus, what do you use it for and how often?

	often	occasionally	never
Work	3 (0.9%)	15 (4.3%)	251 (72.
Shopping	24 (6.9%)	69 (19.9	225 (65.
Medical Visits	11 (3.2%)	19 (5.5%)	255 (73.
Social or Leisure	10 (2.9%)	46 (13.3	229 (66.
Other	1 (0.3%)	9 (2.6%)	125 (36.

Question Number : 25

NUMBER OF RESPONDENTS TO QUESTION : 358

How do you rate the bus service for?

	good	reasonable	poor	no opinion
Route	51 (14.2	81 (22.6	34 (9.5%)	179 (50.
Timetable	19 (5.3%)	56 (15.6	95 (26.5	181 (50.
Reliability	34 (9.5%)	76 (21.2	20 (5.6%)	210 (58.
Cost	40 (11.2	66 (18.4	20 (5.6%)	208 (58.
Access for those with disabilities	10 (2.8%)	34 (9.5%)	40 (11.2	221 (61.

Question Number : 26

NUMBER OF RESPONDENTS TO QUESTION : 387

Would you like to see any improvements in the bus service with regard to?

Routes	67 (17.3
Timetable	127 (32.
Cost	37 (9.6%)
Reliability	36 (9.3%)
Bus Stop location	19 (4.9%)
Access for those with disabilities	60 (15.5
No opinion	230 (59.

Question Number : 27

NUMBER OF RESPONDENTS TO QUESTION : 462

Are the local taxi services adequate for your needs?

Yes	132 (28.
No	33 (7.1%)
No opinion	297 (64.

Question 24 comments - OTHER USES FOR THE BUS

(Use the bus) very infrequently - return (from) work trip (is) too early

As a non-driver only (use the bus) when car is not available

Times not suitable

We don't use the bus

Would use bus if available to go to work

The bus timetable (is) not very good so have problems using the service

Do not use the bus

Collecting car from Hadleigh after MOT

Park & ride to Ipswich

Don't think I'm on the route anyway

(Never use it) Only because of infrequent service

Specific needs i.e. collect cars from Garage etc.

Too & from college

Not used

Never use a bus

When car broken down

Never use (the bus)

Voluntary work fortnightly

Question Number : 2B

NUMBER OF RESPONDENTS TO QUESTION : 465

Do you think there are any major 'danger-spots' on the roads in and around Elmsett ?

Yes	266 (57.)
No	140 (30.)
No opinion	59 (12.7)

Question 28 comments - MAJOR DANGER SPOTS IN ELMSETT	
Flowton Road. The junction of Hadleigh Road & The Street	
Cars parking on Hadleigh Road (<i>by</i>) "council houses"	
Teachers cars outside school	
Ice & surface water on hill to Ipswich from Flowton Brook	
Hedges overgrown on route to Ipswich	
Whatfield Road as you enter the village and some parts of the road are very narrow	
Pump Corner & Ostend Cottage (top of Hadleigh Road)	
Bend on Hadleigh Road	
Hadleigh Road	
Outside my house (<i>Hadleigh Road? Collector Marion Rowe</i>)	
Narrow roadway in Hadleigh Road (bends)	
Pump Corner	
All over!	
Hadleigh Road bends from "Rosemir" to "Ostend Cottage"	
Outside Willowmere, Hadleigh Road	
On corner by Mill Farm, Pump Corner, on corner by Rosemir -Hadleigh Road.	
Bend near last house on Hadleigh Road , Hadleigh end (Ostend Cottage or Cornhatches Lane??)	
Going away from Elmsett towards Burstall through (<i>the</i>) Brook & up hill	
All narrow bits & bends	
"Cornhatches" bend	
Parked cars on Hadleigh Road between Baybrooks and Sawyers junction	
In need of street lighting	
Pump Corner	
Hadleigh Road where housing finishes on the right and the road narrows a lot and has a bend each side of narrowed road	
Pump Corner	
(<i>There are no danger spots</i>) if used correctly	
Pump Corner	
Cornhatches corner	
Yes, that Land Rover parked next to Hazel Kings'. Mrs March	
Danger spots (<i>are</i>) Pump Corner and Old Chapel Corner	
Pump Corner & School entrance	
Pump Corner & route past shop to school	
Bus shelter Corner & Garrards Road	
Parking outside school	
Cars around school entrance & old council houses (<i>Hadleigh Road?</i>)	
Pump Corner, entrance to playing field	
Danger spots too strong a term - see final comments	
Junction Burstall Road & Ipswich Road	
Rhodd's Farm corner.	
Land Rover Discovery parked outside council houses in Hadleigh Road	
Bottom of Spinney Hill	
Flowton Brook Farm	
Cars & vans parked on Ipswich Road	
Path needs to be continued past the school	
Gatehouse Farm junction	
Only from speeding cars	
Flooding e.g. Flowton Brook farm	
Newlands to Post Office	
Ipswich Road	
All roads due to excessive speed, lack of pavements	
Post Office end of Ipswich Road - no footpath	
The bend on Hadleigh Road	

Junction at bottom of Ipswich Road
Hadleigh Road & Whatfield Road
(No) Just drivers
Narrow roads used by buses i.e. Channel area, Offton Road
Bend going out of Elmsett - Hadleigh Road
Bottom of Ipswich Road for pedestrians.
Whatfield / Hadleigh Road junction
Corners near Elmsett school/village hall. Cars drive too fast; dangerous for pedestrians
Excess speed on Ipswich Road within boundary
Whatfield Road, Hadleigh Road
Pump Corner - bad siting of bus stop & shelter
Whatfield Road when walking to shop or school (speed) and no footpath
The junction on Ipswich Road
Whatfield Rd. Business & local traffic driving too fast & without attention to other road users.
At bus stop and narrow point on Hadleigh Road
On the corner near the bus stop when walking with children, cars come flying round the corner (Whatfield Road)
Several sharp corners e.g. the village green where visibility is limited
On road parking Hadleigh Road
Double bend Aldham road
New road junction B1071
Whatfield Road - speeding traffic
Enforcement of the 30mph limit on the edges would slow & therefore make traffic safer
Bus shelter
Bends on Hadleigh Road x 2
Cars parked on Hadleigh Road x 2
Whatfield Road - people drive at more than 30 mph endangering children resident in the road.
The Dark - people do not wear bright clothing and cannot be seen by motorists
The T-junction at the Street
Manor Road - owing to no speed limit
Junction of Priory Hill with Aldham to Burstall Road
Bends on narrow roads where vehicles are driven too fast
Whatfield Road /speeding and heavy goods vehicles
Straighten out the bend from village to airstrip
Verges and mud banks falling into the road
Most junctions
Bad narrow road and bend (Hadleigh Road)
Between Gate Cottages and the brook
see final comments
Double bend by the Nook, Hadleigh Road, Eley's Corner, by bus shelter
Pump Corner
Between Elmsett & Hintlesham near Priory Farm - hedges need cutting back for more visibility
Several spots
1) High hedges & no footpaths make bends in road dangerous for walkers & drivers
2) Narrow lanes and roads esp. Hadleigh Road from Aldham through to Elmsett PO
Pump Corner, Ipswich Road too narrow
Where road becomes single track on all roads into and out of Elmsett
From Elmsett to Hadleigh when icy
Near the school
Top end Flowton Road/ Spinney Hill
Hadleigh Road bend
Where roads narrow
Sharp unsigned bends, narrowing roads
Where drivers speed or travel too fast for the road where no 30 mph speed limit
Pump Corner to Burnt House Corner (by "Ostend") especially the latter end.
Red Hill corners
Turning right coming out of Ipswich from the main road down to Burstall
Hadleigh by-pass when riding a bike
Lack of footpaths
Aldham to main road
Hadleigh Road near Ostend Cottage - road too narrow
Junction at Ipswich Rd. & Aldham Rd.
Burstall Hill, most roads in & around Elmsett
The Street
Blind corners

Junction of Ipswich Road with Hadleigh to Burstall Road
Chapel
11 Windings Road – dangerous on road parking
Parking of teachers vehicles at school
Both "T" junctions Hadleigh to Burstall Road
Junction near Gate Farm
Road down to Somersham. This is because people drive too fast for the type of road
Vehicle parked on bend approaching "The Street" T junction from Hadleigh
Cornhatches bend
The narrow roads without pavements make it difficult when one goes walking a lot especially when 2 cars or vans are passing each other. I have a bad hip & have to avoid the camber of the road & I'm deaf!!!
Too many to list
Outside shops
Corner of The Street / Hadleigh Road
The corner (uphill) from & past Flowton to Burstall & many other roads/lanes around Elmsett
Hadleigh Road – cars parked on road just before Sawyers junction
1) The triangle at the end of Ipswich Road (at edge of village)
2) The hill and bend as you go out of Flowton Brook towards Burstall - water on road and dangerous bend
"Corble's" Corner
Between Flowton Brook & Burstall
Junction @ The Street
Bottom of Sawyer's along Hadleigh Road cars parked
In general
Many narrow bends which with bikes , cars and pedestrians are dangerous spots
Between Elmsett & Burstall
1) No passing places - not marked either
2) Poor visibility owing to hedgerows etc.
Basically totally inadequate for traffic level
Also
Junction at Methodist Church
No pavement
Vehicles don't slow down
Bend by Cornhatch
Village pump triangle
Person 1) Narrow width of Ipswich Road
Person 2) Everywhere
Hadleigh side of village road
Top of Ipswich Road (T junction)
Bottom (village end) of Hadleigh Road as meets the Street
Where Whatfield Road meets the Street (near bus stop)
a) Everywhere when roads are not gritted
b) outside shop before & after school
Bend by Cornhatches of Hadleigh Road
Laurel Cottage Corner, Flowton Road
Any narrow bend with poor visibility
Whatfield Road – traffic too fast
People drive too fast through the village on narrow roads
The Street bend between the school and village hall
The bend going out of Elmsett towards junction towards Aldham
Leaving Elmsett towards Hadleigh near Aldham corner
Haven't been living here long enough
Hadleigh Road by Methodist church
Corner of The Street turning left into Hadleigh Road. No footpath (but lots of litter)!
Bus shelter, Pooh Corner , hedgerows not adequately cut back by SCC
Discovery parked on Hadleigh Road
Whatfield Road & Hadleigh Road
Whatfield Road (bus shelter corner) badly sited bus stop - and extremely dangerous when cars park there
Cow Bridge
Bridge Offton Road
Sharp bend on Hadleigh Road & Flowton Road & pavement on The Street would be good
Cars parking on Hadleigh Road
Bridge between Church Farm & Elmsett Hall also outside shop/pub & telephone box
Outside school gates during school hours
Corner by school gate – parking on road

Not where, but What: Teenagers on bikes with no lights, both in twilight & in the dark
Laurel Cottage corner & Rhodds Farm corner
Person 1) Pump Corner
Person 2) ditto
Outside school where teachers cars are parked
Red Hill

Question Number : 29

NUMBER OF RESPONDENTS TO QUESTION : 434

Would you support the following speed control measures in Elmsett ?

Extension of the speed limit	92 (21.2)
More road warning signs	155 (35.)
Children at play signs	157 (36.)
Targeted traffic calming please specify where	107 (24.)
Introduce a speed limit	69 (15.9)
None of the above	120 (27.)

Question 29 comments - WHERE SHOULD TRAFFIC CALMING BE PLACED
Outside the Village Shop : cars parked at the school
On each road as you enter the village
Bends on Hadleigh Road
Humps on Hadleigh Road
All Suffolk villages have a speed limit but enforcing it is impossible unless cameras are used
Hadleigh Road bends from "Rosemir" to "Ostend Cottage"
Outside Willowmere, Hadleigh Road
On corner by Mill Farm, Pump Corner, on corner by Rosemir -Hadleigh Road.
Outside School
On Hadleigh Road by Ostend Cottage. On Ipswich Road coming into the village before the bungalows and in <u>The Street</u> between Manor Road and Hazelwood
Between "Comhatches" junction and Ostend Cottage, Hadleigh Road - SLEEPING POLICEMEN
Near <i>(the)</i> school
Garrards Road
Garrards Road
Down Garrards Road
see final comments
Ipswich Road, Hadleigh Road, Whatfield Road
Speed limits <i>(are)</i> mostly ignored - traffic calming needed in village populated areas & school
None of these are any use if cars take no notice
The Street
Ipswich Road
Traffic calming at all 30 mph signs, Ipswich Road and by the school
Ipswich Road, village end <i>(as per Q28)</i>
Near school & shops & bend on Hadleigh Road
All entry points into the village
Wildfowl warning notices outside Gate Farm
Warning of deer crossing notices on road to Ipswich past Gate Farm Cottages
Continue Aldham's 30mph limit past Gate Farm to Cottages
Entering the village <i>(on)</i> Ipswich Road, Hadleigh Road & near school
Traffic calming when entering the 30mph zone on Ipswich Road
Corners near Elmsett school/village hall. Cars drive too fast, dangerous for pedestrians -several places on this road could benefit from "sleeping policemen"
Ipswich Road entrance to village
Whatfield Road
Entrance to village at Whatfield Road end
Whatfield Road
We saw a small boy nearly run over by the recycling space of the school on the path side. Also there should be a way of walking though the village safer <i>(and biking)</i>
Traffic calming on The Street, Hadleigh Road and Whatfield Road

Cut hedgerows & 30mph signs visible
Whatfield Road
On the edges
Traffic calming prior to sharp bends
All roads that go in/out of Elmsett (<i>should have</i>) Sleeping Policemen!
(<i>Traffic calming</i>) Near village shop & in Manor Road, 30mph.
No large JCB tractors along Manor Road as road is not wide enough
Manor Road
Outside the school & Post Office
Not in favour of more and more road signs
Manor Road
(<i>Need</i>) more signs telling what speed limit is
All roads leading into and out of, Elmsett
Compliance with the speed limit
In main street near shop & school
Hadleigh Road
Limits to heavy traffic through' village
Near the school
Whatfield Road and The Street
Near school and Hadleigh Road (near centre of village & on bend)
In residential areas
Hadleigh Road
Like to see people keep to 30 miles an hour.
School / Hadleigh Road / Eleys Corner / especially dangerous on bend by Ostend Cottage / The Nook etc
Sufficient at present
School
20mph Hadleigh Road & The Street
Street lights
On all housing estates
No further restrictions required
School and playing field entrances
We have a 30 mile speed limit which should be adequate
All four major roads
There is already a speed limit
School / Hadleigh Road / Ipswich Road / Whatfield Road
In village centre + approach roads e.g. Hadleigh Road + Ipswich Road + Whatfield Road where people walk + cycle frequently
Police need to perform random checks with cameras
Village pump triangle
Top of Ipswich Road (T junction)
Bottom (village end) of Hadleigh Road as meets the Street
Where Whatfield Road meets the Street (near bus stop)
As approach the village from other side (<i>Offton Road</i>)
Between Ipswich Road & Hadleigh Road on main Street
On all roads as you enter village - to remind people there is a speed limit
Random speed checks in The Street, the road is like a race track!
The Street (speed humps)
Current 30mph limit generally ignored & inadequately policed
Traffic calming in the central road
Speed camera - Whatfield Road & Hadleigh Road
Weight limit on Flowton Road
God preserve us from <u>more</u> road signs
School corner
Traffic calming possibly on entry to village. Also please enforce speed limit which seems to be ignored especially along The Street
Off the Hadleigh by-pass & Hadleigh Road

Question Number : 30
 NUMBER OF RESPONDENTS TO QUESTION : 500

How important to the local community is Elmsett School

Very Important	415 (83)
Important	56 (11.2)
Not very Important	1 (0.2%)
No opinion	28 (5.6%)

Question Number : 32
 NUMBER OF RESPONDENTS TO QUESTION : 491

Do you feel the outdoor play facilities could be improved

Yes	245 (49)
No	55 (11.2)
No opinion	191 (38)

Question Number : 34
 NUMBER OF RESPONDENTS TO QUESTION : 271

In relation to educational facilities, does Elmsett need any of the following?

Nursery School	135 (49)
Playgroup	171 (63)
After school clubs	151 (55)
Holiday play scheme	120 (44)
Adult education evening classes	151 (55)
Mother and baby group	130 (48)
Registered childminders	123 (45)
Full day care for children	65 (24.0)

Question Number : 31
 NUMBER OF RESPONDENTS TO QUESTION : 486

Do you feel that the School Site is in need of modernisation/expansion

Yes	265 (54)
No	35 (7.2%)
No opinion	186 (38)

Question Number : 33
 NUMBER OF RESPONDENTS TO QUESTION : 77

If you have children of primary school age do they attend Elmsett Primary School

Yes	55 (71.4)
No - special needs school	1 (1.3%)
No - private education	9 (11.7%)
No - home educated	0 (0.0%)
No - Other local primary school	12 (15.6)

Question Number : 35
 NUMBER OF RESPONDENTS TO QUESTION : 402

Is there need for more accommodation of the following types in Elmsett ?

Private rented	58 (14.4)
Local authority/housing association rented	122 (30)
Owner occupied	62 (15.4)
Shared ownership	59 (14.7)
Sheltered housing	79 (19.7)
Adapted housing	30 (7.5%)
Restricted sale to local people	136 (33)
Low cost sale	225 (56)
Other	
There is no need for any of these	72 (17.9)

Question 35 Comments - HOUSING TYPES/NEEDS OTHER SUGGESTIONS

Parish Council should monitor low cost house purchases
More 2 & 3 bedroom houses & bungalows (at) affordable prices for young families
Insufficient knowledge to give opinion
Building plots for sale
No opinion
Don't know - no opinion
(Restricted sale to local people should be available) if there is a demand for it
No opinion
(There is no need for more accommodation it would) Only add to more traffic on poorly maintained roads.
Not in a position to judge
Very difficult to comment upon this aspect without knowledge of local expected take-up of property
Affordable plots for self-build housing
We are not aware of what the needs are
No opinion
Bungalows for disabled
Small family homes - 3 bedroom
No opinion
Any scheme to encourage youngsters to stay in village
Don't see a particular need for any of above (options) BUT if new development was to be considered we would choose owner occupied

Question Number : 36
 NUMBER OF RESPONDENTS TO QUESTION : 503

Is your doctor's surgery/health centre in?

Hadleigh	334 (66.
Bildeston	165 (32.
Boxford	0 (0.0%)
Ipswich	4 (0.8%)

Question Number : 37
 NUMBER OF RESPONDENTS TO QUESTION : 477

Do you have any difficulty in getting to the following?

	often	occasionally	never
Hospital	13 (2.7%)	45 (9.4%)	392 (82.
Doctor	9 (1.9%)	46 (9.6%)	412 (86.
Chemist	3 (0.6%)	24 (5.0%)	401 (84.
Chiropodist	4 (0.8%)	14 (2.9%)	316 (66.
Optician	3 (0.6%)	21 (4.4%)	385 (80.
Dentist	2 (0.4%)	31 (6.5%)	406 (85.
Other medical facility please specify	0 (0.0%)	2 (0.4%)	105 (22.

Question 37 Comments - DIFFICULTIES GETTING TO OTHER MEDICAL FACILITIES

Home visits when necessary (from Doctor & Optician)
I have a car for this purpose at present!
Am taken by relatives
No difficulty so long as our cars are running well!
Not Yet!
Theoretically never any difficulty getting to the above but only one I have availed myself of to date is the optician - by own transport
At the moment the car provides
Physiotherapist
I make appointments to fit in with the restricted bus service
Never
Rely on relatives
Have to rely on friends for transport to visit the doctor

Question Number : 38
 NUMBER OF RESPONDENTS TO QUESTION : 457

If you have used any of the following services which cover Elmsett during the last year, how do you rate the service?

	good	Reasonable	no opinion	poor	not used the service
Doctor	297 (65.	81 (17.7	8 (1.8%)	1 (0.2%)	47 (10.3
Doctor's appointment	183 (40.	139 (30.	53 (11.6	0 (0.0%)	48 (10.5
District Nurse	25 (5.5%)	8 (1.8%)	0 (0.0%)	2 (0.4%)	229 (50.
Health visitor	11 (2.4%)	6 (1.3%)	5 (1.1%)	2 (0.4%)	238 (52.
Home help	2 (0.4%)	0 (0.0%)	0 (0.0%)	1 (0.2%)	247 (54.
Ambulance	19 (4.2%)	3 (0.7%)	9 (2.0%)	2 (0.4%)	227 (49.
Maternity care	4 (0.9%)	3 (0.7%)	0 (0.0%)	0 (0.0%)	246 (53.
Chiropody	18 (3.9%)	8 (1.8%)	7 (1.5%)	1 (0.2%)	229 (50.
Loan of medical equipment	11 (2.4%)	1 (0.2%)	4 (0.9%)	1 (0.2%)	239 (52.
Meals on wheels	0 (0.0%)	0 (0.0%)	0 (0.0%)	2 (0.4%)	248 (54
Counselling services	3 (0.7%)	0 (0.0%)	0 (0.0%)	3 (0.7%)	246 (53.
Physiotherapy services	16 (3.5%)	10 (2.2%)	6 (1.3%)	3 (0.7%)	226 (49.

Question Number : 39
 NUMBER OF RESPONDENTS TO QUESTION : 499

Do you have problems in collecting medicine on prescription?

Yes	24 (4.8%)
No	429 (86.)
Not applicable	46 (9.2%)

Question Number : 40
 NUMBER OF RESPONDENTS TO QUESTION : 487

Is there a need for a 'good neighbour' type scheme in Elmsett ?

Yes	267 (54.)
No	33 (6.8%)
Don't know	187 (38.)

Question Number : 41
 NUMBER OF RESPONDENTS TO QUESTION : 478

What are your views on the standard of the following services in Elmsett ?

	good	reasonable	poor	no opinion	have not used
Fire	48 (10.0)	51 (10.7)	9 (1.9%)	20 (4.2%)	331 (69.)
Police	32 (6.7%)	70 (14.6)	76 (15.9)	22 (4.6%)	257 (53.)
Ambulance (Emergency)	46 (9.6%)	44 (9.2%)	27 (5.6%)	21 (4.4%)	316 (66.)
Hospital (Transport)	18 (3.8%)	21 (4.4%)	19 (4.0%)	32 (6.7%)	354 (74.)
Police (Emergency)	13 (2.7%)	28 (5.9%)	33 (6.9%)	28 (5.9%)	348 (72.)
Police (Bobby)	16 (3.3%)	40 (8.4%)	77 (16.1)	31 (6.5%)	287 (60.)
Neighbourhood Watch	28 (5.9%)	81 (16.9)	41 (8.6%)	39 (8.2%)	266 (55.)

Question Number : 42
 NUMBER OF RESPONDENTS TO QUESTION : 418

Do you think that any of the following measures are needed?

A greater police presence	256 (61.)
Better consultation between police and	117 (28.)
Street Lighting	175 (41.)
More advice on Household Security	56 (13.4)
More on crime prevention/neighbourhood	125 (29.)
More drug/drink education/prevention	163 (39.)
Other please specify	21 (5.0%)

Question 42 Comments - SUGGESTED MEASURES TO IMPROVE PERSONAL SAFETY
Approach by police to parents whose children use UNLIT cycles after dark
Street lights - Garrards Road, Hazelwood, Sawyers
Street lighting not needed
What's the sense of Neighbourhood Watch as most people are out all day which is when most crimes take place
Street lighting would do away with the country atmosphere
Community action on vandalism
A greater nightly presence of traffic police to combat "drink driving"!
Better response to reported problems by police
NO street lighting x 2
Definitely street lighting
Need Honesty (regarding a greater police presence)
more on crime prevention
more drink education
Action to prevent mindless vandalism
The last time a police officer (walked/cycled) around Aldham, Elmsett & Whatfield was over 10 years ago. It was me!
As the then local special constable - since when I have seen a police presence about 5 times. I appreciate that Manor Road isn't considered to be the "hub" of Elmsett.
More Drink/Drive awareness (needed) by police

(Would like to see a greater police presence) Only in that it is comforting to see a policeman about, especially when there is rowdy behaviour amongst youths.

Dog fouling box at entrance to Community Centre vandalised when trying to use same on Friday 4/1/02

Neighbourhood Watch. There was one in the village do not know if it still operates

In a year I have never seen a police car or policeman

Definitely NOT street lighting!!

(Street lighting) Central part of village

(More on household security & crime prevention) - Individual visits can be arranged

Lighting needed around School to deter vandals

Police presence when disco on in village hall

Police presence useful occasionally when the pub shuts at night-time on a Saturday night to reduce noise especially from racing cars

A greater discipline from residents over control of litter and graffiti

Security lighting around the school & village hall

NO to street lighting! Emphatically!!

Question Number : 43

NUMBER OF RESPONDENTS TO QUESTION : 489

What do you think of the state of the following?

	good	reasonable	poor	no opinion
Roads	53 (10.8)	316 (64.)	104 (21.)	3 (0.6%)
Pavements	28 (5.7%)	169 (34.)	176 (36.)	55 (11.2)
Verges	25 (5.1%)	210 (42.)	192 (39.)	34 (7.0%)
Roadside Hedges	46 (9.4%)	214 (43.)	175 (35.)	30 (6.1%)

Question Number : 44

NUMBER OF RESPONDENTS TO QUESTION : 503

How often do you use the following shops and services?

	Daily	Weekly	Monthly	Less Frequently	Never
Local shop	103 (20.)	242 (48.)	50 (9.9%)	86 (17.1)	16 (3.2%)
Post Office	12 (2.4%)	236 (46.)	101 (20.)	108 (21.)	37 (7.4%)
Mobile Library	1 (0.2%)	1 (0.2%)	11 (2.2%)	9 (1.8%)	437 (86.)
Hairdresser	1 (0.2%)	10 (2.0%)	48 (9.5%)	80 (15.9)	327 (65.)
Pub	9 (1.8%)	69 (13.7)	55 (10.9)	114 (22.)	223 (44.)
Village Hall	4 (0.8%)	59 (11.7)	55 (10.9)	246 (48.)	115 (22.)
Farm Shop	1 (0.2%)	28 (5.6%)	30 (6.0%)	53 (10.5)	316 (62.)
Mobile Food Services	8 (1.6%)	16 (3.2%)	10 (2.0%)	27 (5.4%)	394 (78.)
Mobile Hairdresser	0 (0.0%)	4 (0.8%)	17 (3.4%)	13 (2.6%)	422 (83.)
BT phone box	0 (0.0%)	2 (0.4%)	1 (0.2%)	51 (10.1)	407 (80.)

Question Number : 45

NUMBER OF RESPONDENTS TO QUESTION : 408

If you usually shop in Elmsett is it because?

The local shops give good value	68 (16.7)
You like to support local shops	268 (65.)
You like the social contact	96 (23.5)
It saves time	181 (44.)
It saves transport costs	121 (29.)
You don't have transport to go elsewhere	23 (5.6%)
You need 'last minute' items	309 (75.)
Other	13 (3.2%)

Question 45 Other Comments - WHY I SHOP IN ELMSETT

Person 1) Want the shop to survive

Person 2) I concur

I do not shop in Elmsett

I have no transport and it is very good. The fruit & veg. are very fresh

Post Office
Uses Post Office for business
Sweets, Papers
Lottery
The family shops for me weekly
Village shop offers a friendly service
Post Office
Collect daily papers
To me shopping is a chore and if I don't support the local shop, there may come a time when there isn't one! I've seen the demise of 2 shops in Whatfield & 1 in Elmsett all within a few years timespan. Cycling 3½ miles is easier than motoring 16 to Ipswich (and cheaper)
I'm afraid we find the shop & P.O. disappear if not used
Excellent service
Do not shop in village
Daily paper
The shop has a good range of goods and services
Local shop "goods" are quite reasonable, for a "convenience" shop & for a small shop, holds quite a lot of stock, unfortunately they cannot compete with Sainsbury's, Tesco etc. which pensioners will use, if they are lucky enough to have someone to do their shopping once a week
Post Office & Lottery
Post Office
Buy mainly fruit, vegetables, bread

Question Number : 46

NUMBER OF RESPONDENTS TO QUESTION : 432

If you usually shop out of Elmsett, is it because?

Goods are perceived to be cheaper	253 (58)
You have more choice there	373 (86)
It is convenient to your place of work	108 (25)
Nearer local school/nursery	11 (2.5%)
Other	26 (6.0%)

Question 46 Other Comments - WHY DO I SHOP OUTSIDE ELMSETT

Occasionally shop outside the village because of more choice
Also where facilities (e.g. butcher) do not exist
Combine shopping with other activities
Somebody shops for me
It's convenient
Link major shopping with other business in Ipswich
On way to work
I think you should support your village shop
Family does my shopping
Because I am in Hadleigh with friends
More friendlyer (<i>sic</i>)
Don't Shop!!
Not applicable - local shopping only (<i>see Q45</i>)
I shop in Hadleigh for things which are not available at the Village Shop
Bulk buying & cost
Reliant on transport by daughter
Naturally there are shops such as tailors & shoe shops outside Elmsett
Shop hours not very flexible (local shop)
Buy petrol & combine trip to use other shopping facilities (clothes, books, DIY etc.)
Shopping done for me by family living outside the village
The "Outing" factor
Shop monthly in supermarket
Large bulk shopping

Question Number : 47

NUMBER OF RESPONDENTS TO QUESTION : 437

If you use the local Post Office, please say what for?

Postal services	408 (93.
Pensions/Allowances	131 (30.
Giro bank/savings certificates etc.	61 (14.0
T.V. licence/other bills	170 (38.
Information leaflets	51 (11.7
Foreign Currency/Holiday Insurance	55 (12.6
Alternative High Street banking	93 (21.3
Other services please specify	8 (1.8%)

Question 47 Comments Other Services - WHAT ELSE DO I USE THE POST OFFICE FOR
Shopping
Lottery
Evening paper
<i>(Do Not Use Elmsett Post Office-I Consider) Unreliable</i>
Cashing cheques for cash to use in the shop
Lottery
Fax Service, Dry Cleaning
Flowers
Lottery

Question Number : 48

NUMBER OF RESPONDENTS TO QUESTION : 250

Which new sports clubs/activities would you attend in Elmsett if they were provided?

Youth football	19 (7.6%)
Badminton	77 (30.8
Bowls	32 (12.8
Billiards	14 (5.6%)
Judo	5 (2.0%)
Keep Fit	106 (42.
Squash	32 (12.8
Tennis	61 (24.4
Volleyball	12 (4.8%)
Yoga	71 (28.4
Skateboard park	9 (3.6%)
Other	27 (10.8

Question 48 Comments Other - SUGGESTED SPORTS CLUBS
Hockey
Bridge Club
Over sixty club
Outdoor
Community service
Dancing (salsa)
I attend carpet bowls
5 A-side for "old boys"
Snooker
Snooker
None
Possibly a cycling club (for the less young!)
Snooker
Outdoor bowls
None
Gym
Golf
Pilates
Cycling club, Walking club
Rugby
<i>(Would attend Badminton Club) Only if there were premises that could provide the size & height required - village hall would not be suitable</i>
Line Dancing
Gym
None now but would if younger
Table tennis
Table tennis

Question Number : 49
 NUMBER OF RESPONDENTS TO QUESTION : 247

Which new clubs/activities would you attend in Elmsett if they were provided?

Whist drive	23 (9.3%)
Gardening Club	81 (32.8)
Rambling Club	81 (32.8)
Art Club	45 (18.2)
Choir	21 (8.5%)
Music Society	19 (7.7%)
Creative arts for children	16 (6.5%)
Youth Club	12 (4.9%)
Adult education	134 (54.)
Other please specify	7 (2.8%)

Question 49 – Comments - OTHER NEW CLUBS/ACTIVITIES
Adult education only if of interest to me!!
Solo whist drive
Bridge Club
(Adult education) dependant on subjects
Craft classes
Reading circle
Folk club (acoustic music by village for village) or dance, Morris Dancing !?!
Folk Club both song & dance
Social club (licensed) where all the family were welcomed. (No smoking area please!)
No
Possibly a cycling club (for the less young!)
None
Line Dancing
Social evenings
None
Craft classes - preferably in the afternoon
(Art club or Adult education) If it is in the evenings in winter, need transport. Would visit in afternoons. Be quite alright in the summer when it's light
(I would attend a Garden Club, Art Club & Adult Education) However, such activities are unlikely to attract the necessary numbers
Group which visits shows (London, Norwich, Bury St Edmunds)
None now but would if younger

Question Number : 50
 NUMBER OF RESPONDENTS TO QUESTION : 455

What are your views on local social facilities for?

	good	reasonable	poor	no opinion
Children up to 16	23 (5.1%)	92 (20.2)	159 (34.)	127 (27.)
Young people 17-25	0 (0.0%)	45 (9.9%)	201 (44.)	143 (31.)
People 26-60	9 (2.0%)	152 (33.)	108 (23.)	133 (29.)
People over 60	40 (8.8%)	163 (35.)	40 (8.8%)	177 (38.)

Question Number : 51
 NUMBER OF RESPONDENTS TO QUESTION : 438

It would appear that the options for the future of the Hall are

- A) Continue with the existing Hall that does not meet all the needs of the village and with a spiralling maintenance budget.
- B) Investigate the possibility of construction of an appropriate new Hall with external funding
- C) Investigate the possibility of a joint development of the Hall and school with external and local education authority funding that would have mutual benefits of securing the future of both uses.

What is your preferred option for the Hall

A	23 (5.3%)
B	61 (13.9%)
C	354 (80.8%)

Question Number : 52
 NUMBER OF RESPONDENTS TO QUESTION : 453

Would you use a redeveloped Hall?

Yes	399 (88.
No	54 (11.9

Question Number : 53
 NUMBER OF RESPONDENTS TO QUESTION : 504

Where do you usually get information about events taking place in Elmsett ?

Elmsett and Aldham Newsletter	483 (95.
Local paper	53 (10.5
Notice Board	132 (26.
Local Shop	196 (38.
Local radio	21 (4.2%
Word of mouth	308 (61.

Question Number : 54
 NUMBER OF RESPONDENTS TO QUESTION : 499

Do you read the following?

	Every issue	Every 2 - 3	Less frequently	Never
Elmsett and Aldham Newsletter	427 (85.	31 (6.2%	17 (3.4%	22 (4.4%
Babergh Focus	134 (26.	56 (11.2	89 (17.8	139 (27.
Action 2001 (Suffolk County Council news)	86 (17.2	43 (8.6%	80 (16.0	184 (36.

Question Number : 55
 NUMBER OF RESPONDENTS TO QUESTION : 276

If yes, when was the most recent meeting you attended?

Within the last year	39 (14.1
Between 1-2 years ago	32 (11.6
Between 2-4 years ago	37 (13.4
5+ years	168 (60.

Question Number : 56
 NUMBER OF RESPONDENTS TO QUESTION : 477

How well does the parish council publicise its decisions and activities?

Very well	39 (8.2%
Reasonably well	201 (42.
Badly	75 (15.7
No opinion	162 (34.

Question Number : 57
 NUMBER OF RESPONDENTS TO QUESTION : 487

The parish council is empowered to raise money through the council tax. Are you satisfied with the way this money is spent?

Very satisfied	26 (5.3%
Quite satisfied	149 (30.
Quite dissatisfied	11 (2.3%
Very dissatisfied	17 (3.5%
Don't know how it is spent	180 (37.
No opinion	104 (21.

Question Number : 58
 NUMBER OF RESPONDENTS TO QUESTION : 479

Would you be prepared to pay a slightly higher council tax to meet some of the needs of Elmsett ?

Yes	216 (45.
No	173 (36.
No opinion	90 (18.8

Question Number : 59
 NUMBER OF RESPONDENTS TO QUESTION : 458

Do you feel your elected representatives in local government are sufficiently aware of local concerns and feelings?

	fully aware	quite aware	not aware	no opinion
Parish Council	97 (21.2	146 (31.	50 (10.9	157 (34.
District Council	38 (8.3%	120 (26.	92 (20.1	193 (42.
County Council	18 (3.9%	57 (12.4	141 (30.	227 (49.

Question Number : 60
 NUMBER OF RESPONDENTS TO QUESTION : 501

Is the Churches important to you?

For Sunday worship	201 (40.
For baptisms	207 (41.
Weddings and funerals	273 (54.
As a focal point for the community	246 (49.
As an historic building	242 (48.
Every village should have one	208 (41.
Other	2 (0.4%)
No opinion	99 (19.8

Question Number : 61
 NUMBER OF RESPONDENTS TO QUESTION : 490

Do you think the local religious groups are involved enough in local community affairs?

Yes	246 (50.
No	13 (2.7%
No opinion	231 (47.

Question Number : 62
 NUMBER OF RESPONDENTS TO QUESTION : 45

Would you be interested in attending any of the following activities if Elmsett Churches were to provide them?

Alpha-type Course	13 (28.9
Seeker Service	0 (0.0%)
Meditation Group	17 (37.8
Prayer Group	18 (40.0
Weekday Worship	17 (37.8
Saturday Worship	3 (6.7%)
Charismatic Worship	2 (4.4%)
Silent Worship Group	2 (4.4%)

Question 62 Comments - OTHER RELIGIOUS ACTIVITY SUGGESTIONS
Happy with facilities as they are
No
R C Holy Mass
Sorry I'm a professed atheist
Not able
1) Bible study groups 2) Agreed
Healing
Bible study course
No
No
Weekend courses/groups for working adults
Present provision is OK

Question Number : 63
 NUMBER OF RESPONDENTS TO QUESTION : 385

What do you think should be done to help protect and enhance the local environment of Elmsett ?

More Recycling	165 (42.
Energy saving - indicate how	23 (6.0%
Improved public transport	180 (46.
Car sharing	85 (22.1
More employment locally	127 (33.
Reduce traffic - indicate how	50 (13.0
Improved rights of way	98 (25.5
Advice on healthier lifestyles	57 (14.8
Other please specify	29 (7.5%

Question 63 Comments - WHAT CAN BE DONE TO PROTECT AND ENHANCE THE LOCAL ENVIRONMENT OF ELMSETT?

Encourage people to walk or cycle locally - no idea how!!
Encourage people to walk & talk
Weight or size restriction - rumble strips
Restricting the use of road to huge lorries
Weight restriction upon heavy goods vehicles, maximum loaded weight 10 tons
Improved public transport that is cheap and reliable
Tree planting, hedge planting
Encourage use of cycling - safe cycle way to Hadleigh e.g. track via Aldham across fields to Hadleigh
Ensure no more industrial development
Solar, wind turbines - more buses
Alternative forms of energy
Ban large lorries
More education
Children's outdoor play area
Barrier on village hall to prevent loud car music!!
Walk to school & shop
Can't believe how many people use their cars to drive around the village - why not walk?
Litter situation
Introduce vehicle weight limits
Traffic calming throughout the village will slow all traffic down and possibly put off outsiders cutting through the village to get from A - B
Speed restrictions (Whatfield Road) = less drivers would want to use it as a rat-run
(Support Car sharing) where practical
Get rid of lorry business
School runs (to reduce traffic)
Discourage car use for short journeys by speed limits, road humps, traffic calming. Encourage walking by providing off road short cuts & rights of way and protected pavements
Litter collection groups could be organised
More recycling/greater 30mph speed limits
I cannot get my dust bin emptied properly at any time & have to demand a pink bag! A thoroughly 3rd rate service. A new contractor should be appointed
Cut down on lorries
It needs an expert investigation into this aspect - I cannot make any viable comment I'm afraid
Encourage use of wind turbines - particularly for school & village hall
Width of roads here not suitable for very heavy traffic vehicles which now use the area more frequently
One way systems!
Refusal of new planning permission
Cover any issue as it presents itself
Discourage caravans
Better footpath signs
Supply, at cost, energy saving bulbs for outside lights. Advice on home energy saving
I think parents should instruct the school children not to drop sweet wrappers, crisp packets and soft drink cans around the village
Energy saving - advice; material availability - financial assistance for those in need
Wind turbines ; reduce traffic by improving roads for cyclists and pavements for walking
Close down Airfield
Better litter bins /dog waste bins
Street lighting & pavements = more pedestrians, less cars.
Enforcement of speed limit!
Close airfield!
Local authority should advertise & encourage all new building developments that eco-friendly + energy saving designs
More litter bins. Rubbish from shop (cans, drink cartons) sweets, lolly wrappers end up in our front garden & driveway
A big clean-up campaign - it is now sadly a dirty looking/sad village - remember the flower planting at the village signs
Use of smaller buses
Improve public transport for people working in Ipswich and attending college
Banning of "school runs" for parents living within 1/2 mile of school
Reawaken community pride

Question Number : 64
 NUMBER OF RESPONDENTS TO QUESTION : 458

What do you think could be done to protect wildlife in Elmsett ?

	very important	worth doing	not necessary	don't know
Create local nature reserves	103 (22.)	169 (36.)	52 (11.4)	27 (5.9%)
Discourage too many people using countryside	20 (4.4%)	41 (9.0%)	213 (46.)	21 (4.6%)
Reduce pollution in the countryside	179 (39.)	136 (29.)	22 (4.8%)	10 (2.2%)
Campaign against litter and rubbish	227 (49.)	160 (34.)	20 (4.4%)	8 (1.7%)
Look after (eg) marshes and wetlands/la	228 (49.)	141 (30.)	8 (1.7%)	14 (3.1%)
Create new ponds	61 (13.3)	132 (28.)	79 (17.2)	45 (9.8%)

Question Number : 65
 NUMBER OF RESPONDENTS TO QUESTION : 490

Is the appearance of the following?

	Good	Reasonable	Poor	No opinion
Rectory Meadow	166 (33.)	235 (48.)	24 (4.9%)	50 (10.2)
Play Area	80 (16.3)	231 (47.)	88 (18.0)	65 (13.3)
Maltings (Village) Green	143 (29.)	243 (49.)	39 (8.0%)	51 (10.4)

Question Number : 67
 NUMBER OF RESPONDENTS TO QUESTION : 205

Does Elmsett suffer from any of the following types of disturbance?

Traffic noise	60 (29.3)
Farm animals in gardens/on roads	4 (2.0%)
Hunting	19 (9.3%)
Low-flying aircraft	120 (58.)
Military exercises	35 (17.1)
Noise pollution	24 (11.7)
Light pollution	38 (18.5)

Question Number : 68
 NUMBER OF RESPONDENTS TO QUESTION : 418

Do you think that the traffic problems in Elmsett are related to any of the following?

Lack of parking	51 (12.2)
Lorry traffic	99 (23.7)
Pedestrian/vehicle conflict	85 (20.3)
Traffic speed	193 (46.)
Need for more public transport	51 (12.2)
Need for more pavements	163 (39.)
Large agricultural vehicles	100 (23.)
No traffic problems	97 (23.2)

Question Number : 69
 NUMBER OF RESPONDENTS TO QUESTION : 376

If you experienced difficulties when using local footpaths and bridleways, which if any, of the following difficulties did you find?

Farm animals	0 (0.0%)
High stiles	2 (0.5%)
Locked gates	1 (0.3%)
Barbed wire	6 (1.6%)
Mud/water	107 (28.)
Crops across path	122 (32.)
Other users	3 (0.8%)
Bushes/nettles	113 (30.)
No signposts	60 (16.0)
No difficulty experienced	161 (42.)
Other please specify	30 (8.0%)

Question 69 Comments - DIFFICULTIES EXPERIENCED USING FOOTPATHS AND BRIDLEWAYS.
(The) Squeech needs a trim up
Cornhatches RUPP
Not adequate support across ditches
Some farmers use slug pellets, damages dogs feet
People
Animal deposits
Slippery wooden bars on footpath between Ipswich Road (by old gas station) & Flowton Road (opp Redhouse Farm)
Too many ploughed footpaths
Lack of maintenance & ploughing of some footpaths
Walks inaccessible for wheelchair users
Horses on footpaths
Paths ploughed up
Bridleway blocked by fallen trees
Low aircraft when walking or riding down Cornhatches
Where are the public footpaths?
Signposts vandalised
What footpaths?
I'm strictly a "keep to the roads" traveller but I have noticed the public footpath from Manor Rd. To Whatfield Rd getting more neglected these past few years
Dog faeces
Less than legal width left after footpath reinstated after drilling where it is permitted for footpath to be ploughed up when footpath crosses field
Footpaths not kept clear
Mud on Roads from farm vehicles coming off fields
Do not use, bit nervous on my own (walk on roads)
Would appreciate greater variety of circular dog walks - access to interesting woodlands is prohibited
Difficulty arises when footpath is ploughed up along with rest of field
Inconsiderate farm husbandry
Farmers ploughing & then not maintaining signed footpaths
How ridiculous to suggest mud, water, nettles are a potential problem on a footpath
As farm worker most problems are people not keeping to footpaths or dogs on lead

Question Number : 70

NUMBER OF RESPONDENTS TO QUESTION : 460

What do you think could be done with the local roads, lanes and paths to make the countryside more attractive?

	very important	important	worth doing	not necessary	don't know
Remove litter	206 (44.)	85 (18.5)	73 (15.9)	14 (3.0%)	5 (1.1%)
Keep roadside verges mown and tidy	123 (26.)	104 (22.)	98 (21.3)	45 (9.8%)	13 (2.8%)
Let roadside verges grow for wildlife	32 (7.0%)	40 (8.7%)	49 (10.7)	151 (32.)	21 (4.6%)
Stop vehicle damage to road verges	113 (24.)	94 (20.4)	106 (23.)	35 (7.6%)	10 (2.2%)
Signpost paths and bridleways	50 (10.9)	116 (25.)	101 (22.)	27 (5.9%)	26 (5.7%)
Repair gates stiles and bridges	30 (6.5%)	113 (24.)	115 (25.)	21 (4.6%)	29 (6.3%)
Close some footpaths and bridleways	6 (1.3%)	10 (2.2%)	10 (2.2%)	196 (42.)	54 (11.7)
Open more footpaths and bridleways	37 (8.0%)	61 (13.3)	79 (17.2)	99 (21.5)	48 (10.4)
Remove unnecessary sign posts	13 (2.8%)	21 (4.6%)	78 (17.0)	124 (27.)	56 (12.2)
Make paths accessible to those with disabilities	49 (10.7)	55 (12.0)	109 (23.)	54 (11.7)	42 (9.1%)
Reduce traffic	20 (4.3%)	16 (3.5%)	26 (5.7%)	76 (16.5)	63 (13.7)

Question 70 Comments - WHAT COULD BE DONE WITH THE LOCAL ROADS TO MAKE COUNTRYSIDE MORE ATTRACTIVE	
Church Road, & Flowton Road could have severe speed restrictions	
Encourage bikes by creating bike parking facilities	
Flowton Road : restrict heavy vehicles except for access	
Weight restriction	
Restrict large vehicles - lanes not wide enough	
Weight restriction	
Need to strike the right balance with safety on roads, access and wildlife (<i>in relation to mowing verges or otherwise</i>)	
More cycle routes away from roads	
Fail to see how traffic reduction is possible	
Try to reduce speed	
see final comments	
More public transport	
Large lorries (<i>damage verges or ban?</i>)	
Allow grass & flowers to grow on "triangles"	
Villagers should walk or cycle rather than using a car	
Can't believe how many people use their cars to drive around the village - why not walk?/ encourage walking	
(<i>Roadside verges</i>) can affect drivers view in places and be dangerous	
Weight, width & length restrictions to vehicles	
Traffic calming throughout the village will slow all traffic down and possibly put off outsiders cutting through the village to get from A - B	
(<i>Reduce traffic</i>) Speed - Enforce speed limits	
Initiate "Quiet Lanes" policy for appropriate roads e.g. Manor Road, Offton Road or Whatfield Road past Airfield	
Sleeping policemen	
Lower speed limits on narrow roads	
Roadside verges need 2 cuts a year	
Holding back container lorries etc. From coming through the village - especially from major roads eg Sudbury & A14 or A140	
Make verges less wider / roads more wider!	
(<i>Let verges grow for wildlife</i>) - Where it is <u>not</u> dangerous to road users / walkers with dogs/children	
(<i>To Reduce traffic</i>) Encourage people not to use car for very short journeys if possible	
No more houses built	
(<i>Accessible paths for disabled</i>) Is this possible?	
(<i>Reduce traffic</i>) on certain routes / use others more	
Safety of traffic / more passing places	
Pavements/some street lighting to reduce traffic within the village	
Cut hedges back (not down) from roads on bends	
Lorry weight restrictions	
Walk or cycle your children to school/playgroup	
Encourage local employment	
Reduce "school runs"	
Encourage walking, cycling improve local school	
Better public transport	
Verges need to be kept free of nettles & brambles - as a pedestrian it is difficult to get out of the way of speeding vehicles if one cannot step out of the way onto verges	

Question Number : 71

NUMBER OF RESPONDENTS TO QUESTION : 434

Should Eimsett celebrate the Queens Golden Jubilee next year

Yes	290 (66)
No	144 (33)

Additional Survey Comments

<p>1. Tidy up "street furniture" and eliminate superfluous signs. LESS IS BETTER</p>
<p>2. Traffic volume is not a problem : speed and vehicle/pedestrian conflict is</p>
<p>3. A lot of village centre LITTER is caused by children who buy sweets etc. after leaving the school bus. It should be simple to encourage them to take wrappers home</p>
<p>4. Conduct a survey of DRAINS & DITCHES around the village centre - esp. near village green. Flooding is going to be an ongoing problem</p>
<p>5. The community will get the community HALL it deserves. The rebuilding/redevelopment of the Village Hall must be done with due regard to residents approval if it is to succeed. Too big and support will evaporate, too small and there will be criticism. A nice problem!</p>
<p>A School & Village Hall & Parish Council Strategy Group should be formed to look at and develop a strategy to link the joint venture of school & village hall buildings</p>
<p>Road drainage is a problem for almost the entire length of Whatfield Road - from outside of village to the pond. Drainage needs doing</p>
<p>Consideration should be given to traffic increase and the Whatfield Road capability of taking more traffic in any decision to increase housing. No more building after Brownfield sites are developed</p>
<p>Installation of curbs causes more danger to motorists when large vehicles approach</p>
<p>Yes - all roads need gritting in bad weather Garrards Road, Sawyers and Hazelwood. They pay council tax the same as everybody else.</p>
<p>The verges along Hadleigh Road have been eroded away by lorries, farm vehicles. In some cases half a metre has been lost from private properties' roadside verges.</p>
<p>3 water mains have been ruptured in recent years which in the opinion of the respective property owners was caused by heavy lorries and farm vehicles .</p>
<p>Overhead supply wires have been torn down by farm vehicles with straw bales stacked too high on trailers</p>
<p>(Would) like to see Elmsett Mill demolished and replaced with light industrial units</p>
<p>Very comprehensive exercise</p>
<p>Q58 - (Higher council tax for Elmsett) Council tax is ridiculously high now!!</p>
<p>As I am 88 years old and don't get out & about - I felt that I am not up to date in village affairs - so felt unable to answer some of the questions</p>
<p>Q61 - (Are local religious groups involved enough in local community affairs?) St. Peter's has no facilities for community activities</p>
<p>Q35 - (Any higher council tax for Elmsett) depends on how much and what for</p>
<p>I consider that the flats should be allocated to older people with the same interests</p>
<p>I would love to see more of a play area by the school for small children. I have my grandchildren a lot - aged two & five years old & they need a bigger area to use</p>
<p>In icy times Garrards Road, Sawyers, Hazelwood should be gritted. We pay council tax the same as everybody else but these roads are not touched. The bin men come down these roads so there is no reason why the gritters shouldn't!</p>
<p>Also Garrards Rd. Sawyers should have some street lights. Hazelwood have why haven't we?</p>
<p>The village sign should be on Pump Corner</p>
<p>Q59 - don't know who the elected representatives are</p>
<p>Q67 - dogs barking</p>
<p>Q51 - (Village hall options) Aldham must also be considered (Joint development preferred) Provided Adult Education could be included.</p>
<p>Q52 - (use of redeveloped hall is) Dependent on activity</p>
<p>Q64 - (What could be done to protect wildlife) The land at the rear of Hazelwood development was intended for use as a nature reserve. Should this now be reconsidered?</p>
<p><u>Final Comments (from attachment)</u></p>
<p style="text-align: center;"><u>Questions 28, 29 68 & 70</u></p>
<p>In general there is little high speed driving in the village, although there may be some inappropriate speed i.e. within the 30-mph limit but too fast for road conditions. The only effective speed control measure is police enforcement - unlikely in a small village. Traffic calming measures are an urban solution not appropriate for village roads.</p>
<p>In this village we have a small road network that developed over the centuries and have remained virtually unchanged at</p>

the 19th century pattern and widths. That is meeting the needs of a rural economy with the horse and cart being the only traffic. The roads were not surfaced until the 1920's when motor traffic spread into the villages. This surfacing consisted of "tar and chip". It was not until the early 1950's (after the laying of water mains) that a conventional asphalt wearing course was laid. A further course was laid in the early 1970's when sewers were installed.

Today we, like every other village, have:-

- a) Substandard roads as recommended in the current design criteria.
- b) A road construction that has over the years been damaged by the various public utilities and heavy traffic, allowing water to weaken the road foundation.
- c) Narrow roads with edges that are over run by traffic damaging the road edge and verge.

These are the roads we have to carry the traffic that exists. It is unrealistic to suggest that any meaningful traffic reduction can be made. Residents have cars and need to use them; Delivery of goods and services must be made. With an increasing village population traffic will continue to increase. However, these village roads are part of the charm of the rural village and we must make the best use of the existing road pattern.

At this time of year (*January*) we can see where the major problems exist. These are on the narrow sections of road, often with poor visibility, where two vehicles cannot easily pass without mounting and damaging the verge and weakening the edge of the carriageway. This is often outside houses, damaging the edge of private gardens, much to the annoyance of the resident. It is difficult for residents to know where the edge of the highway lies; that is where the highway verge (the highway authority's responsibility) meets the edge of the resident's property.

It may well be the resident would be willing to allow the highway authority to construct suitable minor road widening at these problem sites to provide passing places. Such an arrangement could be in exchange for accommodation works on the boundary of the resident's property. Such work could take the form of minor drainage, driveway surfacing or kerbing. To avoid the need to purchase land it may be that exchange of letters would suffice.

There should be some sort of fencing or concrete bollards put round the verge at the entrance to Newlands Road to stop cars & vans parking & also lorries crossing the verge instead of going round on the road

This village is already a close community and people respond when a need arises

Q58 - (*Re moderately higher taxes for Elmsett*) we have no choice in the matter

Q65 - (*What is the appearance of the following? - Village Green*) What is the village green used for?

Q68 - (*Are there traffic problems in Elmsett?*) Parking on pavements in Newlands

Traffic continues to use Newlands for a 3 point turn and have worn the road surface off. Would welcome a no turn sign at the beginning of Newlands and resurfacing.

Please do not spoil our village and the night sky with street lighting

Having lived in the village for 5 months, we have not had much opportunity to use many of the local facilities.

We feel that Elmsett is a nice place to live and would not like to see too many changes. We would like to be more involved in the community in the future.

I would like to see small scale industrial work shops to give young people a job & the old

Nothing is successfully run by a committee - unfortunately!

The answers will not bring the solutions. Village life is changing and all that can be done is to encourage residents to be part of the village life using village facilities and clubs etc.

Suffolk people are now outnumbered which is likely to bring suburbia to Elmsett.

(*Signed*) a "Former Blow-in".

Ps This is not to say that I do not admire those making this effort!

Part of Elmsett's appeal to both of us is its relative isolation and peace & quiet e.g. no background noise from nearest main roads. We think that some aspects which may be considered " lacking in development" are Elmsett's assets e.g. no street lighting, winding narrow surrounding roads

Q67 - (*Does Elmsett suffer from disturbance*) Some domestic security lights dazzle road users

Q67 - (*Elmsett suffers from traffic noise in*) late evening

Q68 - (*Are there traffic problems in Elmsett?*) We suggest a pavement or something be done for people walking from the top of Ipswich Road to the lay-by past the bus shelter.

It is very dangerous walking with young children around the parked cars at the shop and past the bus shelter as a lot of car drivers hug Pump Corner as they come around it.

Person 1

Q51 - (*Regarding the options for the village hall*) The wording of this question is plainly biased against option A. What evidence is there that the village hall has passed its cost effective life? What are the costs of upgrading it against the costs of demolishing and providing new?

Person 2

1) - re-opening of filled ditches could reduce road flooding

2) - proper maintenance of drainage gullies from road into ditches instead of mechanical drill which just creates small dams either side of its trench and takes bites out of road surface

Q44 - (*re BT phone box- never use it*) However: most delivery people use it to find us and ask directions

Person 1

I'd like to see Elmsett school have a proper dedicated hall for the children and permanent classrooms. The Early years/playgroup appears to work but would be more appealing if it was one thing or the other.

Person 2

Q44 - What Farm Shop?

The standard of the school buildings is not good enough for neither students or teachers in the 21st century.

Q25 - no opinion (*on bus service*) as we don't use it

Q43 - (*Safety of roads is reasonable*) Except for problems with speeding

Q67 - (*Elmsett suffers with low flying aircraft*) When more than a reasonable number of flights per day as in past years.

Q68 - (*Traffic speed is the*) Biggest problem in Elmsett

Final Comment

Ever increasing traffic due to the ever expanding population of the village is the key problem in Elmsett. In my opinion the only housing developments should be the odd infill sites and/or specific, limited development aimed at local need i.e. existing villagers needing low-cost housing, if there are any in the first place (has the demand been quantified?) We should not permit large-scale housing development such as the proposed Mill and Maltings Farm sites (combined) on Whatfield Road as the village is rapidly becoming in danger of losing its cosy, small and rural identity. Ultimately it is the extra traffic generated with every new house built that has the most negative impact on the village and this combined with the speeding problems we already have is not a good prospect.

Tight restrictions on housing development and widespread traffic calming especially on Whatfield Road and The Street please!

Villages do not have footpaths or street lighting.

Elmsett has experienced considerable development relative to size. Mill site and Maltings development are unavoidable but a halt should be called to further site development.

How about a community bus run say 3 days per week by volunteers?

Q52 - (*regarding usage of redeveloped hall*) It depends what is on.

Q67 - (*Elmsett suffers from light pollution due to*) The very powerful lights on some houses!!

Final Comments

There may be merit in considering a "LETS" scheme for Elmsett to encourage non-cash trade and support local community contacts

Any measures to maintain the viability of the Village Hall/School and Pub/Shop & local businesses are to be applauded provided they do not unnecessarily erode the rural nature of the village.

What about a wind turbine on the old mill site to provide power for any new development and encouraging solar energy use where possible eg school, new village hall etc.

Q25- Don't know (*about the bus service*) because we've never used it. It does not look accessible for children who use wheelchairs. Therefore, we have not attempted it

Q38 - (*How do you rate health service etc*) Wheelchair service is currently bankrupt so two of our children are not getting equipment they essentially need

Q39 - (*We do not have problems getting prescriptions*) but we have access to a car. It would be a problem without this.

Q43 - What pavements?

Q59 - I don't know whether (our elected representatives are aware regarding) anything being done to improve drainage in Elmsett. The heavy rains revealed that the current situation is inadequate.

Q67 - Shooting birds (*causes disturbance*)

Q60 - (*Are the churches important to you*) We worship outside of the village

Q32 - (*outdoor play facilities*) need to be cleared up

Q40 - (*Good neighbour scheme*) There is already "good neighbour" activity without a "scheme"

Q52 - I would use THE village hall wherever it is

Q58 - What needs? (*would justify a moderately higher council tax for Elmsett?*)

Q64 - Plant new hedges & trees (*to help protect wildlife*)

Final Comments

1) Litter

I think that voluntary groups could be formed to collect litter & clean up dirty areas on a regular basis. The children's play area near to the village hall is often messy (I take grandchildren there)

2) Lighting

I think some "security" lighting is very intrusive - suddenly comes on as you are walking past on the road - quite

alarming if you are not expecting it. Surely these should be positioned so that they are activated by someone on owner's property.

3) Good Neighbour Scheme

we have found the standard of good neighbourliness very high, & many many people are involved in activities of this kind. I am not sure that an organised scheme would do the job any better. I am involved in this kind of activity but would hesitate to commit myself to something without knowing what is involved. A lot of car sharing takes place e.g. for W.I. events

Q43 - What pavements?

Q31 - School staff know best ask them! (*about modernisation*)

Q43 - There are NO pavements that I can use! I.e. from home to village

Q54 - (*Babergh Focus is a*) Waste of taxpayers money - just jobs for the boys, scrap it

Q58 - My council tax is too high now (*without paying more for Elmsett*)

Q62 - These (*religious alternatives*) should be explained more fully. Not many people would know what these are.

Q67 - Heavy tractor traffic (*makes traffic noise*) sometimes early am to late pm. Also late night helicopters (*cause disturbance*)

Q68- (*There is pedestrian vehicle conflict*) along Whatfield Road

Additional parking is required for the Post Office & Shop

Final Comment

Further comment re Q68

Due to the proposed housing development between Chequers Park & the village pond there is now a real possibility of a footpath (pavement) between Chequers House & the pond - crossing over and taking 4 - 6 feet off the village green as far as the Old Rectory.

Whether the existing hedge on the farm land is grubbed out - or left in place & the path constructed in side the new development.

The footpath could be a condition for the developer to proceed. (*Suggested layout drawing in questionnaire*)

I think that the village would benefit from a pavement starting at the bus shelter leading down to the village hall entrance. It has been suggested that it would hinder the cars at the shop but I think the village pedestrians deserve better than they have got, the cars could still park there, there is still room for both.

The village street needs smartening up the verges are unkempt, the hedge is only cut back once a year so most of the time its looking untidy. I know the village hall funds don't stretch to more than one hedge cut but it should looked into, in other words - SMARTEN UP OUR STREET.

More money should be spent on Elmsett. Lighting, pavements etc. Looking to the future with more houses being built consequently more people. Also more gritting of roads in winter needed. Especially Whatfield Road (which is) always neglected.

Q23 - (*my major means of transport is motor cycle/scooter or bicycle*) Dependant on the length of journey & the purpose

Q25 - (*How do I rate the bus service?*) Never been on it - don't know what routes are served, don't believe it passes my door

Q34 - Can't comment (*on educational provision*) no children

Q38 - (*How do you rate health service etc*) Haven't seen a doctor for over 45 years!

Q56 - (*The parish council publicises its decisions & activities reasonably well*) Judgement of Notice Board outside village shop

Q67 -(*Does Elmsett suffer from disturbance?*) None of the above even if I do live nearer Wattisham & the rescue helicopters than most peel in the village

Final comments

I feel that some of the questions need to be the subject of a working party e.g. traffic, environmental etc.

Not being in the thick of the social activities in Elmsett, any views I have put forward are, in the main, allied to the geographic situation of the outlying area in which I live.

Q28 - danger spots

Specifically Manor Road - A very narrow road with some masked bends subject to movement of Heavy Farm Equipment & Delivery Vans - yes they've got a job to do & we should respect it.

There are very few "passing points" on its length and widely spaced which means that even two cars cannot pass without a deal of manoeuvring onto the verge. The state of the verges is deplorable, being soft they get cut up & ooze water & turn to mud.

Just before they laid the present surface (a total abomination of loose stones) the Highways Authority painted "SLOW" signs on the road at strategic points. Then they obliterated them with the new surface!

Whatfield Road - No need to describe this one to anybody. Even narrower than the above. I was forced to take the route between Whatfield 7 Elmsett on 2 wheels during the "rainy season" last year. It was, for the most part, under 6" of flowing water. Something needs to be done to the ditches & drainage in the this road. I know it was the wettest on record but it wont solve itself

To make things work the whole Village needs to act together, instead it always being left to the same people

Very good but comprehensive

Q20 - (*Should following be encouraged?*)

- a) not sure what is meant by small business development and small scale industrial workshops
- b) How many are small groups of houses and how many houses in each group?

Q28 - (*Where are danger spots in Elmsett?*) Most danger from irresponsible drivers

Q40 - (*Good neighbour scheme*), This is a good idea but is it needed in this village? Would it be used?

Q43 - (*Safety of*) Existing pavements very good

Q45&46 - Shop in Elmsett & outside

Q51 - (*Re-development of Village Hall/school*) This question & preamble is biased

Q58 - (*Slightly higher council tax*) answered yes to this but does depend on interpretation of "moderate"

Q68 - (*Re - traffic problems*) Lack of "off -road" parking especially dangerous in Hadleigh Road outside Council houses

Q25 - (*Bus service is reasonable*) In view of the small number that use the service at present

Q40 - (*re - Good neighbour scheme*) There seems to be an excellent neighbourhood spirit from what I know (*but*) if need arises Yes

Q51 - (*Village Hall re-development options*)

Option A (*could*) upgrade in conjunction with the school

Option C -How would this (*joint development*) affect local regular bookings? Would there be a clash of need and availability times?

The Village Hall is for Elmsett & Aldham, money was raised to provide for both villages and they should be included in this survey & conversations

On what basis is the village hall past its effective life?

Q61 - (*Is there sufficient involvement of religious groups in local affairs*) Very good cross section are involved in community activities / leadership - room for more

Q68 - (*Traffic problems include*)

Lorry traffic driving over grass verges outside peoples homes

(*Need to*) Encourage more use of this facility (*public transport*) to help those who rely on it.

Final Comment

Not quite sure of some wording in village hall questions - difficult to define which category without more. It should be a two village discussion as it is a facility for both. I find surveys frustrating - there are so many "ifs & buts"!!!

(*Elmsett suffers from disturbance due to*) Hare coursing

Regarding litter EVERYDAY I pick up other people's rubbish, it's a pity others do not

Parking outside the Methodist Church makes life difficult for motorists

Car sharing is good unless you are a shift worker

Elmsett people have always been good neighbours

We have found the people very friendly since we moved here.

Good questionnaire

Q36 - (*Doctor's surgery in*) Clare

Final Comment

Street lighting throughout the village

Q51 - (*Option*) D - Do not have a village hall

Q44 - Where is the farm shop?

Final comment

An elderly resident who is moderately housebound, many questions are inappropriate to me

Q8 - (*Family member is unable to move within Elmsett because of*) Lack of affordable 1st time homes.

Q67 - (*Elmsett suffers from*) Security lighting on many houses etc. Too powerful - it blinds pedestrians.

Q43 - (*Re safety of pavements*) - too many cars parked on pavements Newlands & especially Windings Road

Q8 - We don't wish to move

Q25 - I know nothing about the bus service

Q30 - (*The*) School is the future of the village

Q43 - (*The pavements are reasonable*) Where there are any.

Final Comments

I feel that the playing field is used only by sports involving boys/men i.e. football /cricket

The netball court on the playground is too small to enable the netball team to play at "Home"

If you could build a "hard" area which was marked for tennis (2 courts) + netball, as long as it had the necessary wall/fencing it could also be used for 5 a-side football.

A tennis club, with public hire of the courts, could provide a welcome social addition to the village.

(See diagram of suggested layout in questionnaire)

Q8 - *(Family member unable to move within Elmsett because)* Unable to afford property prices

After 3 years it is time the building site next to my property in Windings Road was completed.

The road outside the Rose & Crown needs attention, water lays when raining - very icy around New Year.

Q39 - *(Do you have problems collecting medicine on prescription)* Not while my son-in-law can pick prescription up.

Q43 - *(Safety of pavements is poor)* Not enough, few we have are good

(Roadside hedges) need blackberries trimming back

Q44 - *(Use the Village hall)* fortnightly over 61 club

Q55 - *(When did you last attend a Parish Council meeting)* New resident of one year. Will not go out at night when it's dark, without street lighting. No pavements! ~ Too dangerous

Q57 - *(I am very satisfied with the way council tax is spent)* With one reservation. A green garden refuse bag left once a fortnight for garden refuse, composted & sold by Council or one roll of green bags. Future ones to be charged for by council - picked up at council offices. This loss of yours can be turned into a profit, contact Benfleet Council, Essex for information.

Final Comment

As the bus service is not frequent enough for me to go into Hadleigh for bowling during the summer, I wish that we could have bowling greens in Elmsett. After playing for eighteen years I miss it very much. Unfortunately, I had to give up driving.

I've also thought how nice it would be for the youngsters to have some tennis courts, (as I can't now play) I'd certainly be pleased to go & watch them. The large playing green seems big enough to accommodate out-door bowling & tennis courts.

There doesn't seem much here for the young people except the public house.

Incidentally bowling is not just for elderly people like me; at our Westcliff-on-sea courts we had a marvellous team of cadets & a huge number of young people, thirty upwards.

Would it be possible to employ eight seater minibuses to supplement the large buses, it would enable people to get around more, also save on petrol. Do the bus company have this facility?

I apologise for writing on this questionnaire, as I started reading at the start of it, I didn't realise this blank sheet was here to put my comments on.

I was horrified when recently I read the amount of money it was costing the council regarding garden refuse. I understood when living in Benfleet, Essex the council were making a profit by supplying "green" bags; if you used more than the allotted rolls they could be purchased at the council offices. A separate collection was made of these green bags once a fortnight by the refuse lorry (the roads were full of them) these were composted & sold & by reports I heard was doing satisfactorily.

I do realise that a village cannot have all the amenities of a tow; & that too many pavements etc. Would spoil the charm of this village.

Q24 - 26 *(Regarding bus services etc)* Person 1 would use buses to work in Ipswich if they ran at times to cover a 9 -5 working day. Only 1 car would then be needed by the household

Q51 C *(Joint development of village hall with school)* Would be an acceptable option provided the hall part is larger and provided greater facilities than at present. The Hintlesham / Chattisham Hall would be a good model to copy

Great Idea

Very professional

Balanced Questions

Stimulating

Well Done

Need a website for the village as well as the newsletter

Provide internet access point in Post Office & other convenient places

Q32 - *(Could outdoor play facilities be improved?)* Not unless the vandalism stops

Q50 - *(Social facilities for children)* Are good up to 13/14, otherwise poor

Q65 - *(Play area is reasonable)* Too frequently vandalised though

Q67 - *(There is light pollution)* From certain individual houses.

Q68 - There are traffic problems related to

<p>(Lack of parking & lorry traffic) Only at specific times (8.45 -9.00am, 3.15 - 3.45 pm and for large events) (Large agricultural vehicles) Only at specific times of year</p>
<p>Q58 - (Would be prepared to pay moderately higher council tax) Provided it DID go to Elmsett</p>
<p>Q68 - (To what are Traffic problems related?) Air traffic</p>
<p>Q52 - I would use the village hall if younger</p>
<p>As I said earlier in the questionnaire I regularly clear my road of rubbish. I am amazed to see mainly children who have been to the shop after school throw their sweet papers out of the car windows</p>
<p>No discussion on improvements in quality of water supply</p>
<p>Q68 - Damage to verges particularly by school buses Passing place signs on Flowton Road would be of great assistance, especially to drivers unfamiliar with the area</p>
<p>Q68 - (There is a pedestrian/vehicle conflict and need for more pavements) Due to traffic late at night from pub closing</p>
<p><u>Final comment</u></p> <p>With proposed developments in Whatfield Road (to include apparently a study for people to work from home presumably with access via the internet / email) This simply cannot be sustained with the current BT infrastructure. We have been given to understand from BT that most BT customers in Elmsett are already on a "split-line"(DACs) and have no immediate plans to upgrade the present system (which is extremely slow) - limited to 28.8 kbs. This situation needs to be remedied for present Elmsett inhabitants before new ones can be encouraged</p>
<p>Q30 - (How important to the local community are the local churches) -Very Important Q32 - (Do you feel the outdoor play facilities could be improved) - (NO) When improved, generally vandalised Q41 - (Regarding standard of service in Elmsett) (Add) Church/Pastoral service A (good)</p>
<p>Q57 - (Very dissatisfied with how parish council spends tax) How much? £8,000? Q64 - Clean existing ponds & watercourses (to protect wildlife in Elmsett)</p>
<p><u>Final Comments</u></p> <p>25 years ago Elmsett was a very united & clean village, an attractive place to settle. Many of the village's attributes have been eroded by lack of community spirit, commitment & hard work, which do not seem apparent in the next generation. (What's it worth?) The Queen's Golden Jubilee celebrations this June will be a good measure of Elmsett's community spirit. Where are the old folk that need help & the youngsters that need guidance? A big clean-up campaign would be a good way to start with more flower & tree planting - adequately policed by local residents. A street party with some lasting memorial (not a new village hall) would provide the sort of focus to retain some small tradition for the future generations living in Elmsett</p>
<p>Congratulations on taking the trouble to compile the questionnaire. Car parking facilities near church need improvement</p>
<p>Q43 - (Verges & Roadside hedges) Have no idea what "good" means in this context (in terms of safety)</p>
<p><u>Final Comments</u></p> <p>Nature area - we think it would greatly benefit wildlife and enhance the village status as a rural community if the traffic islands were only mown 2-3 times a year. For example late autumn and late summer</p> <p>The village green could also be left uncut for long periods and encouraged to grow as a wild flower meadow a mini nature reserve for all to enjoy</p> <p>Traffic - we also think village life could be improved particularly at school term times by encouraging walking & cycling to school. The very nature of driving to and from school creates congestion and the danger, parents continually harp on about</p>
<p>Having resided in Elmsett for only a short time we feel we are unable to make useful comments or commitments on some issues</p>
<p>We have tried to complete this but so much does not apply as our children are grown up and we do not live in the village. We certainly think for those that do a village hall is important also most important to support the shop and the school</p>
<p>Excessive and over bright security lights on a neighbouring property cause disturbance at night.</p>
<p>Some properties have very bright lights which distract due to the distance they shine - often affecting motorists and making it difficult to see pedestrians</p>
<p>Elmsett is essentially a rural community - pavements & street lighting belong to urban areas & would destroy the character of the village. However, we appreciate that children walking to school need to be safe & a pavement along the Street to the playing field entrance will be beneficial to the village</p>
<p>Q58 - A higher council tax would depend on what it was to be spent on</p>
<p>I felt the section regarding the village hall misleading</p>

It has NOT passed its cost effective life. It is making enough money (to) run comfortably and also extra money is coming in which is being used for improvements.

I believe this statement will mislead people into choosing another alternative which they may not have otherwise stated if this false statement had not appeared in Question 51

I very much welcomed the speed limit when it came to the village but unfortunately an awful lot of people do not observe the 30 mph. I think the majority of these are people who live in the village and not all are youngsters. Walking along The Street at 7.35 am to get the early bus into Ipswich via Hadleigh is a nightmare and with all the brambles and nettles on the verge and the hedge of the playing field allowed to grow so high (now part of it is cut by a resident) it is very dangerous due to the speed of cars.

Also the staff of the school park on the bend and this is very dangerous - cannot the piece of grass to the right of the school be turned into a parking area for the staff?

I do not have a car and not having any family living nearby I have to rely on the bus and to get into Ipswich early in the morning is very difficult. We used to have a bus at 7.55 run by SCC which went into Ipswich and was very convenient. Also Galloways used to run a bus on Saturdays and during school holidays at 8.10 into Ipswich. Now it is 7.35 am into Hadleigh and then change and get a Beeston's into Ipswich - is it any wonder more people don't use the bus, it is just not run to suit the customers needs. I am quite happy with the service of Galloways during the day.

My other problem is getting to see my doctor in Bildeston, but thankfully I have many good friends in the village who take me

Q67 - We do all hear noise from small aircraft & military exercises but we don't feel this is a nuisance we do not in any way support any group in this area to shut down the airfield at Mr Gray's, we in fact support the airfield

Results of the Young Persons Questionnaire.

HOUSEHOLD SECTION

Question Number: 1 NUMBER OF HOUSEHOLDS: 44

How many youngsters including normally live in the village? 58 (Actual based on 90% return would have been) 64

Question Number : 2 NUMBER OF HOUSEHOLDS : 44

Please enter the number of people in your household in each age group:

	Male	Female
11-15	27	20
16-17	5	6

Question Number : 3 NUMBER OF HOUSEHOLDS : 44

Where does your household live?

Hadleigh Road	18 (40.9%)
Whatfield Road	9 (20.5%)
Ipswich Road	6 (13.6%)
The Street	11 (25.0%)

Question Number: 4 NUMBER OF HOUSEHOLDS : 44

If any of your children under 16 are unable to take part in after school activities, please give the reasons why :

Lack of transport home	18 (40.9%)
Distance between home/school	6 (13.6%)
Expense	2 (4.5%)
Special needs not catered for	1 (2.3%)
What you want is not provided	11 (25.0%)

PERSONAL SECTION

Question Number : 5 NUMBER OF RESPONDENTS TO QUESTION : 58

Sex

Male	32 (55.2%)
Female	26 (44.8%)

Question Number : 6
NUMBER OF RESPONDENTS TO QUESTION : 58

What age group do you belong to?

11-15	47 (81.0%)
16-17	11 (19.0%)

Question Number : 7
NUMBER OF RESPONDENTS TO QUESTION : 58

What is important to you about Elmsett?

Community	17 (29.3%)
Environment	33 (56.9%)
Location	17 (29.3%)
Social Activities	14 (24.1%)
Friends	39 (67.2%)
Facilities	12 (20.7%)
Other please specify	1 (1.7%)

Question Number : 8

NUMBER OF RESPONDENTS TO QUESTION : 58

Do you care about the environment of Elmsett

Yes	58 (100%)
No	0 (0.0%)

Question Number : 9

NUMBER OF RESPONDENTS TO QUESTION : 58

What do you think could be done to improve the environment of Elmsett ?

	very important	worth doing	not necessary	don't know
Plant more trees	19 (32.8%)	21 (36.2%)	9 (15.5%)	1 (1.7%)
Cut down some trees	0 (0.0%)	0 (0.0%)	46 (79.3%)	2 (3.4%)
Look after woodlands	26 (44.8%)	23 (39.7%)	0 (0.0%)	3 (5.2%)
Keep hedges short and tidy	16 (27.6%)	23 (39.7%)	8 (13.8%)	7 (12.1%)
Plant more hedges and trees	13 (22.4%)	17 (29.3%)	11 (19.0%)	8 (13.8%)
Have more Litter Bins	27 (46.6%)	26 (44.8%)	0 (0.0%)	1 (1.7%)
Have more benches	11 (19.0%)	33 (56.9%)	7 (12.1%)	3 (5.2%)
More public footpaths and bridleways	15 (25.9%)	23 (39.7%)	9 (15.5%)	6 (10.3%)
Other please specify	2 (3.4%)	1 (1.7%)	0 (0.0%)	0 (0.0%)

Additional Comments	Keep grass short down bridleways.	More bird houses	More bird boxes/feeders
---------------------	-----------------------------------	------------------	-------------------------

Question Number : 11

NUMBER OF RESPONDENTS TO QUESTION : 58

How many times a month do you use the following in Elmsett ?

	more than 10	between 6 and 10	between 1 and 6	less frequently	never
Village Hall	2 (3.4%)	1 (1.7%)	18 (31.0%)	30 (51.7)	5 (8.6%)
Village shop	27 (46.6%)	11 (19.0%)	12 (20.7%)	6 (10.3%)	1 (1.7%)
Village pub	5 (8.6%)	6 (10.3%)	9 (15.5%)	11 (19.0%)	26 (44.8%)
Telephone box	0 (0.0%)	0 (0.0%)	5 (8.6%)	10 (17.2%)	41 (70.7%)

Question Number : 13

NUMBER OF RESPONDENTS TO QUESTION : 26

What clubs/activities do you attend

Pantomime	13 (50.0%)
Sunday School	4 (15.4%)
Girls Brigade	3 (11.5%)
Brass Band	2 (7.7%)
Bowls	2 (7.7%)
Football	4 (15.4%)
Cricket	0 (0.0%)
Other please specify	5 (19.2%)

Other Activities Attended	Autocross	Tennis	Saturday club
---------------------------	-----------	--------	---------------

Question Number : 14
 NUMBER OF RESPONDOENTS TO QUESTION : 52

Which new sports clubs/activities would you attend in Elmsett if they were provided?

Badminton	23 (44.2%)
Darts	12 (23.1%)
Judo	14 (26.9%)
Keep Fit	20 (38.5%)
Squash	9 (17.3%)
Tennis	23 (44.2%)
Volleyball	13 (25.0%)
Yoga	8 (15.4%)
Pool/Snooker	28 (53.8%)
Youth Club	18 (34.6%)
Art Club	12 (23.1%)
Other	14 (26.9%)

Question 14 – Suggestions of other Sports that could be provided
Basketball
Hockey, basketball
Disco, carpet bowls
Drama club
Hockey
Trampolining, skate park (Skateboards)
Football
Dance classes
Football (teenagers/youths only)
Football (girls)

Question Number : 15
 NUMBER OF RESPONDOENTS TO QUESTION : 57

Do you think the amount of information available about what's going on in Elmsett is?

Good	10 (17.5%)
Reasonable	34 (59.6%)
Poor	10 (17.5%)
No opinion	3 (5.3%)

Question Number : 17 NUMBER OF RESPONDENTS TO QUESTION : 48

Would you use the Village Hall more frequently if the facilities or Improvements you suggested in the previous question were made available

Yes	34 (70.8%)
No	14 (29.2%)

Question Number : 18 NUMBER OF RESPONDENTS TO QUESTION : 54

How would you like Elmsett to develop?

As a working community	9 (16.7%)
As a retirement community	1 (1.9%)
As a commuter community	0 (0.0%)
As a tourist centre	2 (3.7%)
To stay as it is	42 (77.8%)
Other please specify	3 (5.6%)

Question 18 – Other comments
Mum's taxi service
Bigger

Question Number : 19
 NUMBER OF RESPONDOENTS TO QUESTION : 57

Do you experience transport difficulties in getting out of Elmsett to other places?

Often	15 (26.3%)
Occasionally	27 (47.4%)
Never	15 (26.3%)

Question Number : 20
 NUMBER OF RESPONDOENTS TO QUESTION : 43

Which of the following is your major means of transport?

Walk	1 (2.3%)
Bike	3 (7.0%)
Motor Bike/Scooter	1 (2.3%)
Bus	3 (7.0%)
Car	34 (79.1%)
Train	0 (0.0%)
Other please specify	1 (2.3%)

Question Number : 21
 NUMBER OF RESPONDENTS TO QUESTION : 55

Would you like to see any improvements in the bus service with regard to?

Routes	25 (45.5%)
Timetable	38 (69.1%)
Cost	18 (32.7%)
Reliability	21 (38.2%)
Bus Stop location	12 (21.8%)
Access for those with disabilities	6 (10.9%)
No opinion	12 (21.8%)
Other Please specify	2 (3.6%)

Question 21 - Other Comments
 I Would like to see more frequent buses

Question Number : 22
 NUMBER OF RESPONDENTS TO QUESTION : 56

Are facilities for cyclists in Elmsett ?

Good	4 (7.1%)
Reasonable	29 (51.8%)
Poor	15 (26.8%)
No Opinion	8 (14.3%)

Question Number : 23
 NUMBER OF RESPONDENTS TO QUESTION : 55

Are facilities for pedestrians in Elmsett ?

Good	5 (9.1%)
Reasonable	24 (43.6)
Poor	23 (41.8)
No Opinion	3 (5.5%)

Question Number : 24
 NUMBER OF RESPONDENTS TO QUESTION : 56

Would you support any of the following road safety improvements in Elmsett?

Extension of speed limit	13 (23.2)
More warning signs	22 (39.3)
Children at plat signs	22 (39.3)
Traffic calming at selected location places	14 (25.0)
Cut back hedges	28 (50.0)
More pavements	45 (80.4)
Zebra crossings	15 (26.8)
More police enforcement of speed limit	19 (33.9)
Other please specify	4 (7.1%)

Question 24 Comments - Safety measures needed at:
On corners
Village Hall entrance; shop; school
The meadow and around Hadleigh Road
Pump Corner; Ostend Cottage (Hadleigh Road)
Speed bumps
Hadleigh Road, near the triangle
Outside Village Hall

Question Number : 25
 NUMBER OF RESPONDENTS TO QUESTION : 55

When you leave home would you like to continue living in Elmsett

Yes	29 (52.7)
No	26 (47.3)

Question Number : 26
 NUMBER OF RESPONDENTS TO QUESTION : 54

Would you like to return to live in Elmsett at some later stage of your life

Yes	39 (72.2)
No	15 (27.8)

Question Number : 27
NUMBER OF RESPONDENTS TO QUESTION : 53

Do you intend to go to university

Yes	43 (81.1)
No	10 (18.9)

Question Number : 29
NUMBER OF RESPONDENTS TO QUESTION : 4

Would you be prepared to help with the upkeep of the environment in Elmsett?

Yes	4 (100.0)
No	0 (0.0%)

Further Comment from the young persons survey.....

I think we should encourage younger children to play sport and if they like football then a nice, clean pavilion and fenced off sports ground will encourage them. Elmsett Athletic Youth Football Club is a good football team, so with more backing they could make Elmsett a noticed footballing village in years to come. Currently, the under 13 level players are 2nd in the B league and are beating people like Clacton, Harwich, Heybridge, Frinton and soon will be in the A league, the best league around. Also a swimming pool would be great for bringing the village together and would help people socialise with other people and also attract holiday makers so a hotel and B&B would be great. The fencing around the football ground will stop vandals destroying our perfect club and FUTURE.

Chronology

Date	
6 March 2001	Open meeting in Village Hall to explain concept and to get support of the village
5 April 2001	First Steering Group Meeting
22 September 2001	Open Day to show progress and seek advice on questionnaire
January 2002	Questionnaires distributed
February 2002	Questionnaires collected
March – August 2002	Data input and Analysis
2 November 2002	Open day to explain results and Actions
December 2002	Distribute final report to village

The Parish Council on behalf of the Village would like to express their thanks for the efforts of the following people who were the Action Plan Committee.

- Alex Bass
- Andy Beeby
- Nick Bird
- Colin Boniface
- Trevor Clarke
- Tracy Horley
- Roger Horne
- Russell Leek (Vice – Chairman)
- Sallie Mountfield
- Alan Newman (Chairman)
- Richard Newman
- Marion Rowe
- Ashley Seaborne
- June Skippings
- Mike Stanbury
- Mike Stock (Secretary)
- Thomas Tippet
- Helen Wilson
- David Wilson
- Alison Grant
- Fiona Potter

© Elmsett Parish Plan Steering Group December 2002

Printed on recycled paper