

ELMSETT

NEIGHBOURHOOD PLAN

2017-2036



LOCAL GREEN SPACE ASSESSMENT

OCTOBER 2018

Prepared by Elmsett Parish Council

Elmsett has a number of 'green spaces' that make an important contribution to the natural environment and fulfilment of residents lives. Paragraph 77 of the 2012 National Planning Policy Framework (NPPF) identifies the possibility of identifying green spaces that meet certain characteristics as "Local Green Spaces". The paragraph states:

77. *The Local Green Space designation will not be appropriate for most green areas or open space. The designation should only be used:*

- *where the green space is in reasonably close proximity to the community it serves*
- *where the green area is demonstrably special to a local community and holds a particular local significance, for example because of its beauty, historic significance, recreational value (including as a playing field), tranquillity or richness of its wildlife*
- *where the green area concerned is local in character and is not an extensive tract of land*

This paper provides an assessment of the green spaces in the village against the criteria in paragraph 77 in order to support the designation of Local Green Spaces in the emerging Elmsett Neighbourhood Plan.

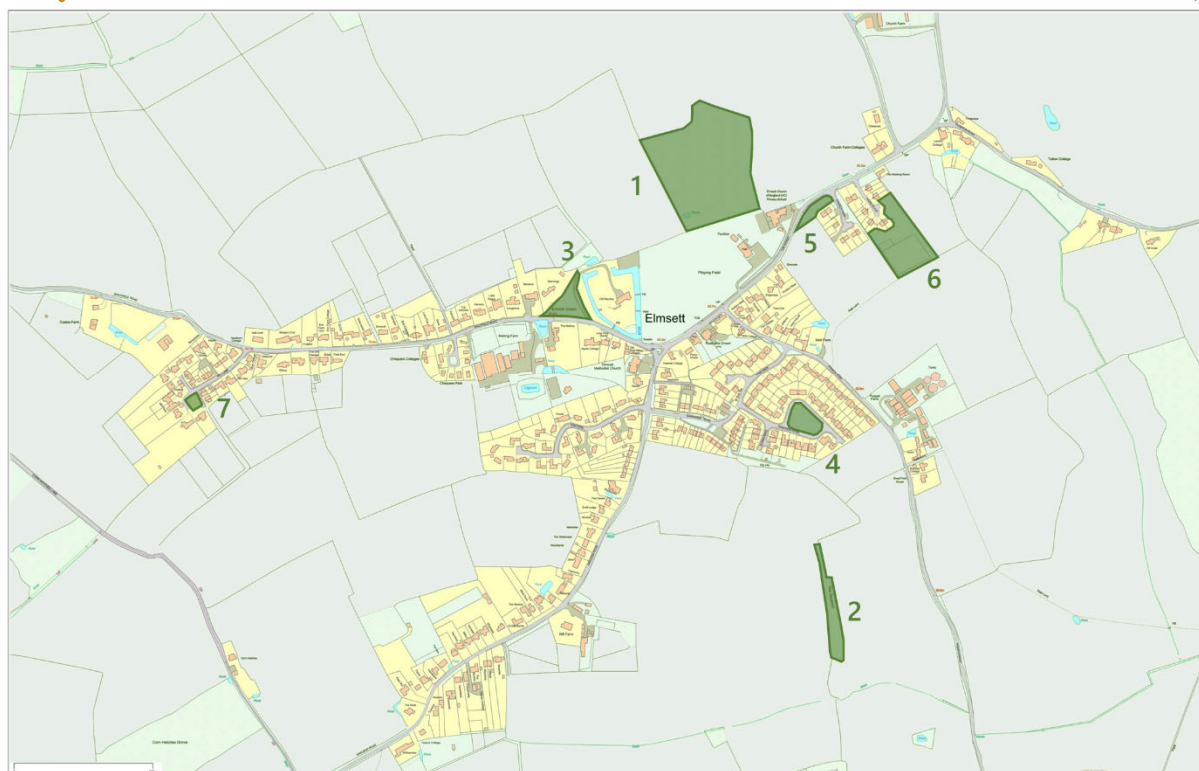
The Identified Green Spaces

The following list of green spaces has been assessed

1. Buckles Wood
2. The Squeech
3. The Green
4. Green at Windings Road
5. Green at Church View
6. Community Open Space at Hazelwood
7. Green at Mill Lane

Assessed Sites Locations

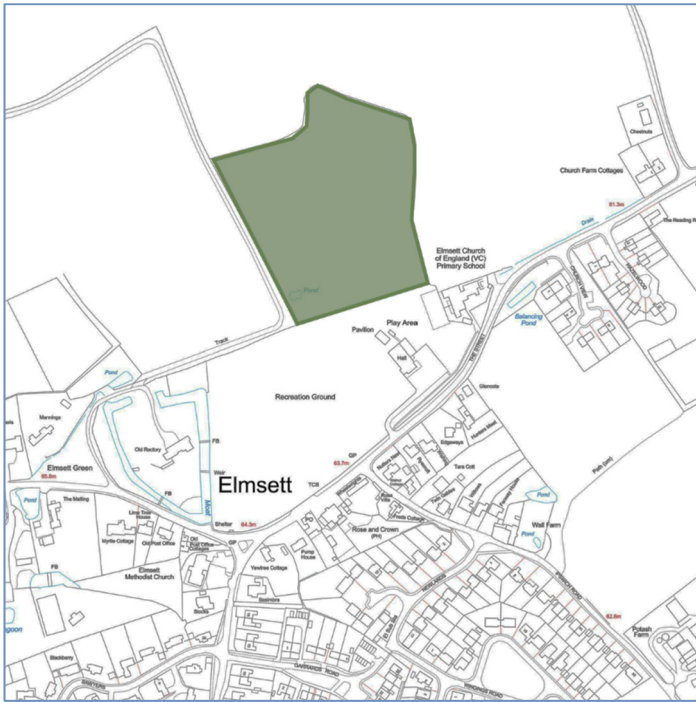
Parish Online



Appraisal

The following pages provide a detailed assessment of the identified spaces to ascertain whether they conform with the Local Green Space definition of the NPPF.

1 Buckles Wood



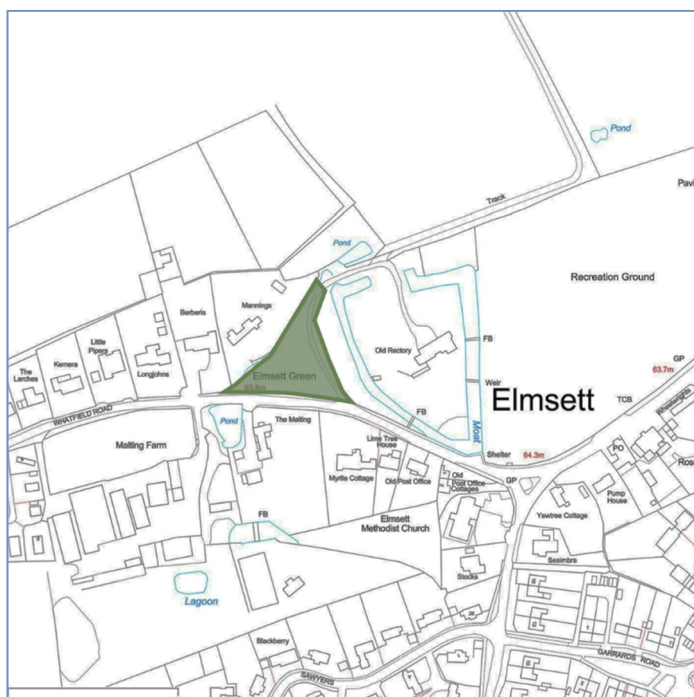
Site Details	
Description and purpose	Elmsett Greenlife Grove Scheme Community Woodland adjoining Village Hall and Primary School
Checklist	
Are there any statutory designations?	No
Is the site designated for any purpose in the Local Plan?	No
Are there any current planning permissions on the site?	No
What is the Site Area?	Approximately 2.7 hectares
Who owns it?	James Buckle
NPPF Criteria Assessment	
Is it close to the community it services?	Yes, direct access from Village Hall and Playing Field
Is there public access?	Yes
Is there any ecological significance?	None known
Is it historically significant?	No – recently planted
Is it demonstrably special to the local community and hold a particular local significance	Yes – established by the local community and the primary school children chose the scheme's name, helped to grow trees and to plant them, and use the woodland as an outdoor classroom.
Is it local in character and is not an extensive tract of land (less than 2.5 hectares)?	Yes,
Conclusion: Meets LGS criteria?	Meets LGS criteria

2 The Squeech



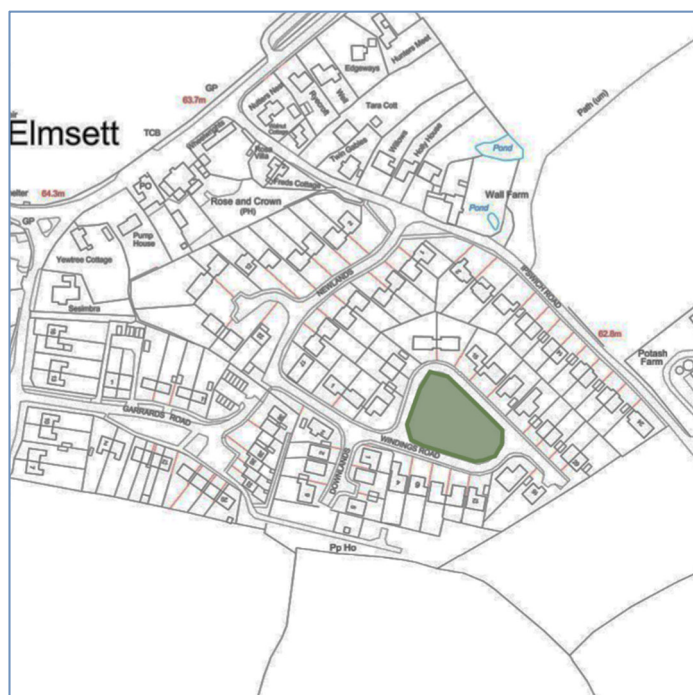
Site Details	
Description and purpose	Woodland
Checklist	
Are there any statutory designations?	Whole area covered by Tree Preservation Order
Is the site designated for any purpose in the Local Plan?	No
Are there any current planning permissions on the site?	No
What is the Site Area?	Approximately 0.3 hectares
Who owns it?	Glebe Land - Parish Council
NPPF Criteria Assessment	
Is it close to the community it services?	Yes, approximately 400 meters from village centre
Is there public access?	Yes – public footpaths lead to the site
Is there any ecological significance?	This area is left unspoilt for wildlife.
Is it historically significant?	None known
Is it demonstrably special to the local community and hold a particular local significance	Yes – it is an important destination for exploration on southern edge of village.
Is it local in character and is not an extensive tract of land (less than 2.5 hectares)?	Yes,
Conclusion: Meets LGS criteria?	Meets LGS criteria

3 The Green



Site Details	
Description and purpose	The Village Green
Checklist	
Are there any statutory designations?	Registered Village Green
Is the site designated for any purpose in the Local Plan?	Area of Visual or Recreational Amenity
Are there any current planning permissions on the site?	No
What is the Site Area?	Approximately 0.26 hectares
Who owns it?	Parish Council
NPPF Criteria Assessment	
Is it close to the community it services?	Yes, in the village centre
Is there public access?	Yes
Is there any ecological significance?	No
Is it historically significant?	Yes – flanked by Listed Buildings to east and west and Scheduled Monument (Moat) forms eastern boundary
Is it demonstrably special to the local community and hold a particular local significance	Yes – the Village Green is a main focal point for the village and contains the Parish Sign which was erected in the Queen's Silver Jubilee Year
Is it local in character and is not an extensive tract of land (less than 2.5 hectares)?	Yes
Conclusion: Meets LGS criteria?	Meets LGS criteria

4 Green at Windings Road



Site Details	
Description and purpose	Amenity open space within housing area
Checklist	
Are there any statutory designations?	No
Is the site designated for any purpose in the Local Plan?	Area of Visual or Recreational Amenity
Are there any current planning permissions on the site?	No
What is the Site Area?	Approximately 0.2 hectares
Who owns it?	Babergh District Council?
NPPF Criteria Assessment	
Is it close to the community it services?	Yes, within residential area.
Is there public access?	Yes
Is there any ecological significance?	None known.
Is it historically significant?	No
Is it demonstrably special to the local community and hold a particular local significance	Yes – Provides open amenity area for residents that surround the green
Is it local in character and is not an extensive tract of land (less than 2.5 hectares)?	Yes-
Conclusion: Meets LGS criteria?	Meets LGS criteria

5 Green at Church View



Site Details	
Description and purpose	Amenity area and SUDS Balancing Pond
Checklist	
Are there any statutory designations?	No
Is the site designated for any purpose in the Local Plan?	No
Are there any current planning permissions on the site?	No
What is the Site Area?	Approximately 0.12 hectares
Who owns it?	Babergh District Council?
NPPF Criteria Assessment	
Is it close to the community it services?	Yes. Fronts onto Church View and opposite Primary School
Is there public access?	Yes.
Is there any ecological significance?	Not known
Is it historically significant?	No
Is it demonstrably special to the local community and hold a particular local significance	No – relatively new open space provided at time of construction of Church View
Is it local in character and is not an extensive tract of land (less than 2.5 hectares)?	Yes.
Conclusion: Meets LGS criteria?	Meets LGS Criteria

6 Community Open Space at Hazelwood



Site Details	
Description and purpose	Open space and young woodland to the rear of Hazelwood
Checklist	
Are there any statutory designations?	Public Footpath
Is the site designated for any purpose in the Local Plan?	Within Special Landscape Area
Are there any current planning permissions on the site?	No
What is the Site Area?	Approximately 0.72 hectares
Who owns it?	Not known
NPPF Criteria Assessment	
Is it close to the community it services?	Yes, to the rear of properties in Hazelwood.
Is there public access?	Yes
Is there any ecological significance?	Not known
Is it historically significant?	No, relatively new and evolving space and woodland
Is it demonstrably special to the local community and hold a particular local significance	Yes, provides open area for play and recreation for local residents
Is it local in character and is not an extensive tract of land (less than 2.5 hectares)?	Yes
Conclusion: Meets LGS criteria?	Meets LGS criteria

7 Green at Mill Lane



Site Details	
Description and purpose	Amenity open space and children's play area
Checklist	
Are there any statutory designations?	No
Is the site designated for any purpose in the Local Plan?	No
Are there any current planning permissions on the site?	No
What is the Site Area?	0.05 hectares
Who owns it?	Not known
NPPF Criteria Assessment	
Is it close to the community it services?	Yes – Centrally located within modern Mill Lane residential area
Is there public access?	Yes
Is there any ecological significance?	No
Is it historically significant?	No – but part of modern housing estate that was constructed around former windmill site.
Is it demonstrably special to the local community and hold a particular local significance	Yes, provides a focal point for children's play in this part of the village.
Is it local in character and is not an extensive tract of land (less than 2.5 hectares)?	Yes.
Conclusion: Meets LGS criteria?	Meets LGS criteria

ELMSETT

NEIGHBOURHOOD PLAN

2017-2036

